

Appendix G: Western Area Hydrographs

NORTH AMERICAN SUBBASIN GROUNDWATER SUSTAINABILITY PLAN


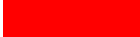

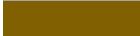
APPENDIX G Western Area Wells with Hydrographs

December 2021

APPENDIX G

WESTERN AREA WELLS WITH HYDROGRAPHS

LEGEND:

	Laguna Formation Wells
	Mehrten Formation Wells
	Wells with Unknown Construction Details
	Ione or Central Valley Fm. Wells

Long-Term Hydrographs

Years Displayed 1950 to 2019

Vertical Axis 50 feet

Unless otherwise noted

Short Term Hydrographs

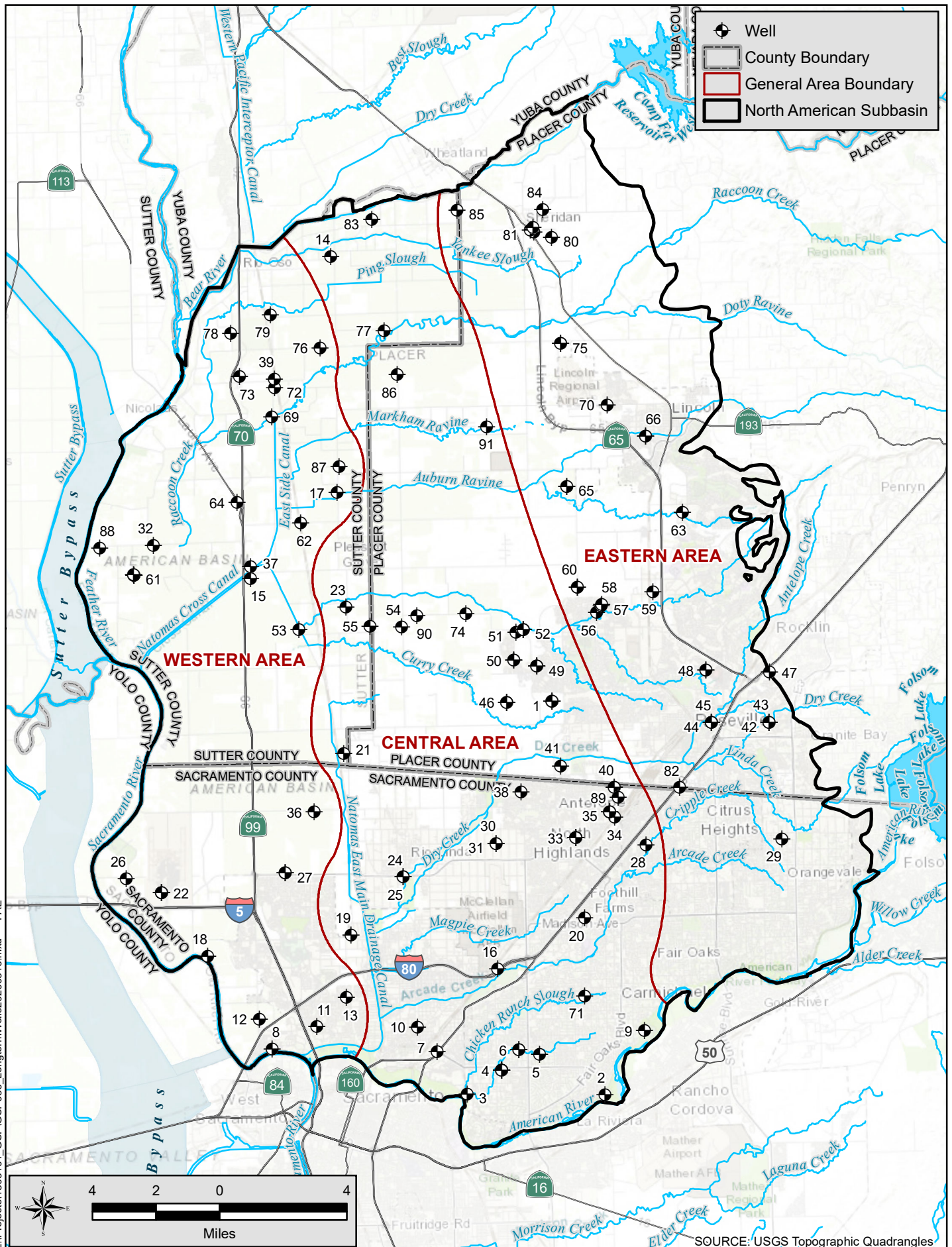
Years Displayed 2004 to 2019

Unless otherwise noted

Vertical Axis 50 feet

Unless otherwise noted

Groundwater levels from multiple aquifers shown



18-Mar-2020 Z:\Projects\1803104_GSP\GIS\SP036_LongtermWells20200316.mxd PAE

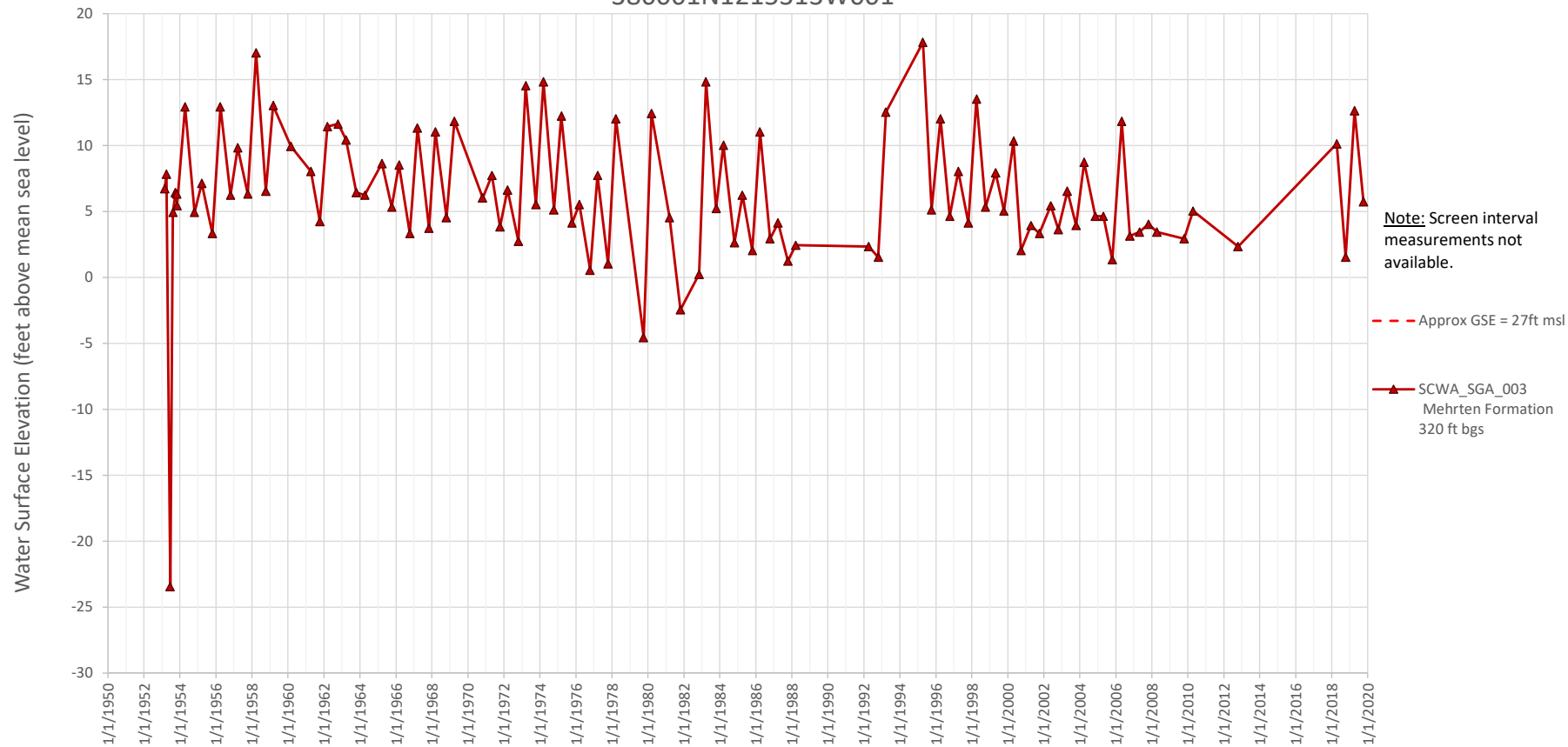
SOURCE: USGS Topographic Quadrangles

North American Subbasin Sutter, Placer and Sacramento Counties	 GEI Consultants	Long Term Wells
North American Subbasin	MARCH 2020	

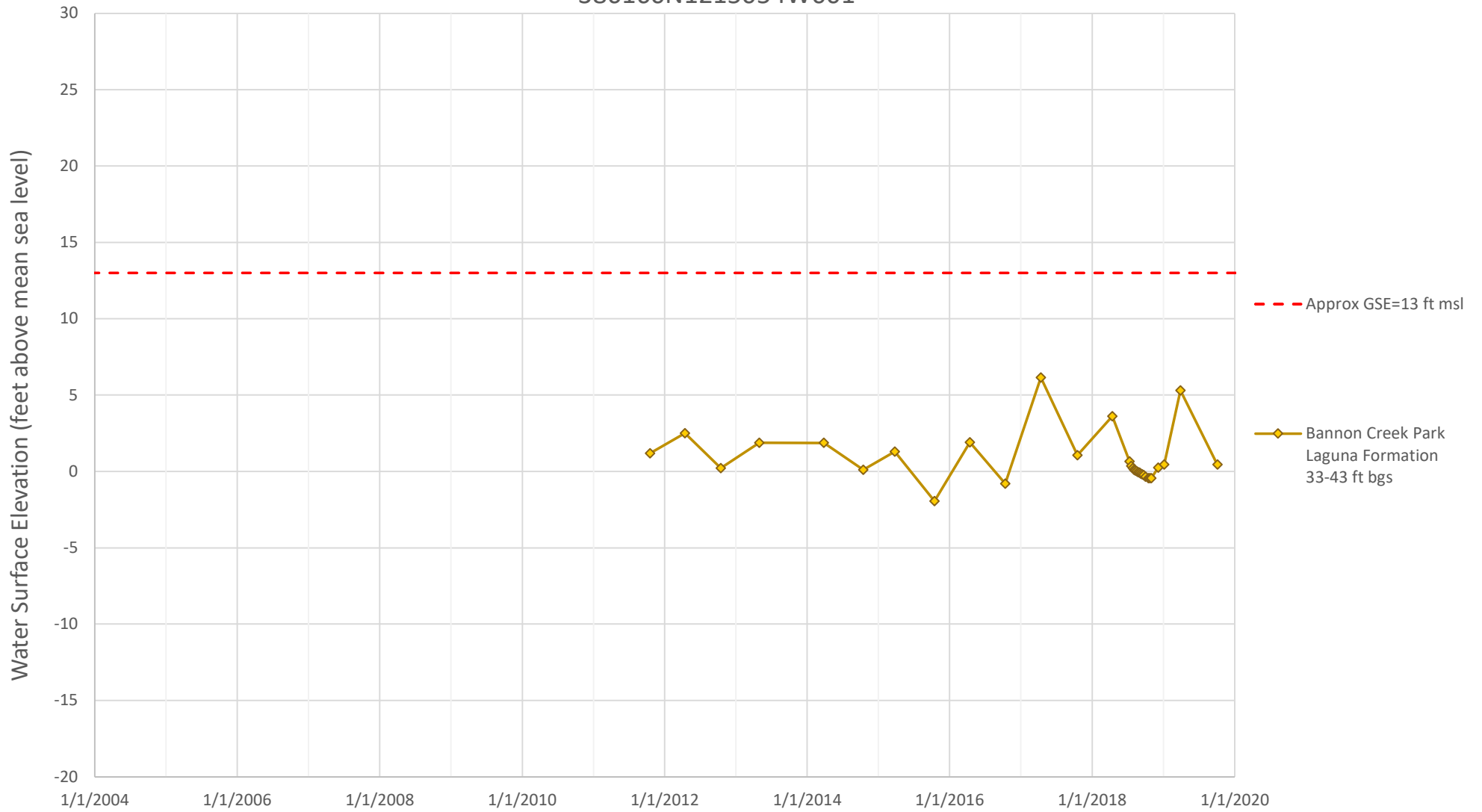
SI No.	Local Well Number	State Well Number	CASGEM Well ID	CASGEM Station ID	Monitoring Entity	GW Basin Name	GW Basin Code	County	Well Use	CASGEM Well	Total Well Depth	Well Construction	Well Completion	Status	Latitude(Y)	Longitude(X)
1	SVMW East-2B	Not Available	48577	381626N1213651W001	City of Roseville	North American	5-021.64	Placer	Observation	Yes	525	Y	NOT AVAILABLE	Active	38.762629	-121.365097
1	SVMW East-2A	Not Available	48576	387626N1213651W001	Department of Water Resources	North American	5-021.64	Placer	Observation	Yes	140	Y	NOT AVAILABLE	Active	38.762629	-121.365099
1	SVMW East-2C	Not Available	48578	387626N1213651W002	Department of Water Resources	North American	5-021.64	Placer	Observation	Yes	670	Y	NOT AVAILABLE	Active	38.76263	-121.365098
2	SGA_MW06	Not Available	48014	385828N1213385W001	Sacramento Groundwater Authority	North American	5-021.64	Sacramento	Observation	Yes	72	Y	e026069	Active	38.58281	-121.33846
3	SGA_MW04	Not Available	48012	385841N1214185W001	Department of Water Resources	North American	5-021.64	Sacramento	Observation	Yes	65	Y	e029066	Active	38.58414	-121.41852
4	MW12A	Not Available	48021	385947N1213985W001	Sacramento Groundwater Authority	North American	5-021.64	Sacramento	Observation	Yes	285	Y	NOT AVAILABLE	Active	38.59472	-121.39847
4	MW12B	Not Available	48022	385947N1213985W002	Sacramento Groundwater Authority	North American	5-021.64	Sacramento	Observation	Yes	385	Y	NOT AVAILABLE	Active	38.59472	-121.39847
4	MW12C	Not Available	48023	385947N1213985W003	Department of Water Resources	North American	5-021.64	Sacramento	Observation	Yes	615	Y	NOT AVAILABLE	Active	38.59472	-121.39847
4	MW12D	Not Available	48024	385947N1213985W004	Sacramento Groundwater Authority	North American	5-021.64	Sacramento	Observation	Yes	845	Y	NOT AVAILABLE	Active	38.59472	-121.39847
4	MW12E	Not Available	48025	385947N1213985W005	Department of Water Resources	North American	5-021.64	Sacramento	Observation	Yes	1005	Y	NOT AVAILABLE	Active	38.59472	-121.39847
5	DWR_SGA_004	09N05E25J001M	9641	386016N1213761W001	Sacramento Groundwater Authority	North American	5-021.64	Sacramento	Residential	No	238	N	94507	Active	38.6016	-121.3761
6	MW11A	Not Available	48018	386038N1213882W001	Sacramento Groundwater Authority	North American	5-021.64	Sacramento	Observation	Yes	187	Y	NOT AVAILABLE	Active	38.6038	-121.38815
6	MW11B	Not Available	48019	386038N1213882W002	Sacramento Groundwater Authority	North American	5-021.64	Sacramento	Observation	Yes	278	Y	NOT AVAILABLE	Active	38.6038	-121.38815
6	MW11C	Not Available	48020	386038N1213882W003	Sacramento Groundwater Authority	North American	5-021.64	Sacramento	Observation	Yes	375	Y	NOT AVAILABLE	Active	38.6038	-121.38815
7	DWR_SGA_005	09N05E28K001M	9643	386038N1214357W001	Department of Water Resources	North American	5-021.64	Sacramento	Irrigation	No	250	N	NOT AVAILABLE	Active	38.6038	-121.4357
8	SCWA_SGA_003	09N04E27F001M	8944	386061N1215313W001	Sacramento Groundwater Authority	North American	5-021.64	Sacramento	Irrigation	No	320	N	828	Active	38.6061	-121.5313
9	SCWA_SGA_004	09N06E27D001M	9648	386117N1213150W001	Sacramento Central Groundwater	North American	5-021.64	Sacramento	Observation	No	200	N	NOT AVAILABLE	Inactive	38.6117	-121.315
10	DWR_SGA_003	09N05E21M001M	31412	386151N1214467W001	Department of Water Resources	North American	5-021.64	Sacramento	Unknown	No	89	N	NOT AVAILABLE	Active	38.6151	-121.4467
11	Bannon Creek Park	09N04E23R002M	48041	386160N1215054W001	Sacramento Groundwater Authority	North American	5-021.64	Sacramento	Observation	Yes	48	Y	NOT AVAILABLE	Active	38.61603	-121.5054
12	09N04E22E001M	09N04E22E001M	8943	386199N1215386W001	Department of Water Resources	North American	5-021.64	Sacramento	Residential	No	-	N	NOT AVAILABLE	Active	38.6199	-121.5386
13	Chuckwagon Park	09N04E13R001M	48040	386292N1214877W001	Department of Water Resources	North American	5-021.64	Sacramento	Observation	Yes	52	Y	NOT AVAILABLE	Active	38.62921	-121.4877
14	13N04E23A002M	13N04E23A002M		389669N1214897W001	Department of Water Resources	North American	5-021.64	Sutter	Residential		83				38.9669	-121.4897
15	11N04E09D002M	11N04E09D002M		388208N1215397W001	Department of Water Resources	North American	5-021.64	Sutter	Residential		100				38.8208	-121.5397
16	DWR_SGA_002	09N05E14B001M	40050	386410N1213995W001	Sacramento Groundwater Authority	North American	5-021.64	Sacramento	Irrigation	No	550	N	49236	Active	38.641	-121.3995
17	AB-2 deep	12N04E26J002M		388593N1214885W001	Department of Water Resources	North American	5-021.64	Sutter	Observation					Active	38.8593	-121.4885
17	AB-2 middle	12N04E26J003M		388593N1214885W002	Department of Water Resources	North American	5-021.64	Sutter	Observation					Active	38.8593	-121.4885
17	AB-2 shallow	12N04E26J004M		388593N1214885W003	Department of Water Resources	North American	5-021.64	Sutter	Observation					Active	38.8593	-121.4885
18	SCWA_SGA_002	09N04E08L001M	29914	386489N1215679W001	Department of Water Resources	North American	5-021.64	Sacramento	Irrigation	No	105	N	185	Active	38.6489	-121.5679
19	SCWA_SGA_001	09N04E01R001M	8921	386576N1214846W001	Sacramento Groundwater Authority	North American	5-021.64	Sacramento	Residential	No	82	N	NOT AVAILABLE	Active	38.6576	-121.4846
20	SGA_MW05	Not Available	48013	386635N1213486W001	Department of Water Resources	North American	5-021.64	Sacramento	Observation	Yes	220	Y	e029068	Active	38.66347	-121.34859
21	10N04E12A001M	10N04E12A001M		387404N1214870W001	Department of Water Resources	North American	5-021.64		Irrigation				Active	38.7404	-121.487	
22	AB-4 deep	10N04E31M001M	39756	386782N1215943W001	Department of Water Resources	North American	5-021.64	Sacramento	Observation	Yes	180	Y	NOT AVAILABLE	Active	38.6782	-121.5943
22	AB-4 middle-deep	10N04E31M002M	24319	386782N1215943W002	Sacramento Groundwater Authority	North American	5-021.64	Sacramento	Observation	Yes	815	Y	NOT AVAILABLE	Active	38.6782	-121.5943
22	AB-4 middle-shallow	10N04E31M003M	37857	386782N1215943W003	Department of Water Resources	North American	5-021.64	Sacramento	Observation	Yes	410	Y	NOT AVAILABLE	Active	38.6782	-121.5943
22	AB-4 shallow	10N04E31M004M	24318	386782N1215943W004	Sacramento Groundwater Authority	North American	5-021.64	Sacramento	Observation	Yes	200	Y	NOT AVAILABLE	Active	38.6782	-121.5943
23	South Sutter	11N04E13D001M		388072N1214842W001	Department of Water Resources	North American	5-021.64	Sutter	Irrigation		535				38.8072	-121.4842
24	SGA_MW02	Not Available	48010	386836N1214536W001	Sacramento Groundwater Authority	North American	5-021.64	Sacramento	Observation	Yes	110	Y	e029062	Active	38.68362	-121.45363
25	SGA_MW03	Not Available	48011	386836N1214536W002	Department of Water Resources	North American	5-021.64	Sacramento	Observation	Yes	305	Y	e034123	Active	38.68356	-121.45362
26	SCWA_SGA_005	10N03E35A001M	40055	386848N1216146W001	Sacramento Groundwater Authority	North American	5-021.64	Sacramento	Irrigation	No	96	N	221	Active	38.6848	-121.6146
27	AB-3 deep	10N04E27R002M	32581	386864N1215222W001	Sacramento Groundwater Authority	North American	5-021.64	Sacramento	Observation	Yes	995	Y	NOT AVAILABLE	Active	38.6864	-121.5222
27	AB-3 middle	10N04E27R003M	15689	386864N1215222W002	Department of Water Resources	North American	5-021.64	Sacramento	Observation	Yes	500	Y	NOT AVAILABLE	Active	38.6864	-121.5222
27	AB-3 shallow	10N04E27R004M	15690	386864N1215222W003	Department of Water Resources	North American	5-021.64	Sacramento	Observation	Yes	220	Y	NOT AVAILABLE	Active	38.6864	-121.5222
28	Twin Creeks Park	10N06E27F001M	48042	386964N1213120W001	Department of Water Resources	North American	5-021.64	Sacramento	Observation	Yes	198	Y	NOT AVAILABLE	Active	38.6964	-121.31203
29	SCWA_SGA_012	10N07E29G001M	33380	386979N1212329W001	Sacramento County	North American	5-021.64	Sacramento	Irrigation	No	240	N	1037	Inactive	38.6979	-121.2329
30	SCWA_SGA_008	10N05E14Q002M	13652	386982N1213992W001	Department of Water Resources	North American	5-021.64	Sacramento	Residential	No	225	N	10678	Active	38.6982	-121.3992
31	SCWA_SGA_009	10N05E26B002M	13654	386982N1213992W002	Sacramento County	North American	5-021.64	Sacramento	Residential	No	150	N	NOT AVAILABLE	Active	38.6982	-121.3992
32	MLF Well #1	11N03E01D001M		388361N1215959W001	Department of Water Resources	North American	5-021.64	Sutter	Irrigation						38.83664	-121.59591
33	Monument (A)	Not Available	48030	387000N1213529W001	Department of Water Resources	North American	5-021.64	Sacramento	Observation	Yes	274	Y	NOT AVAILABLE	Active	38.70005	-121.35288
33	Monument (B)	Not Available	48031	387000N1213529W002	Department of Water Resources	North American	5-021.64	Sacramento	Observation	Yes	334	Y	NOT AVAILABLE	Active	38.70005	-121.35288
33	Monument (C)	Not Available	48032	387000N1213529W003	Department of Water Resources	North American	5-021.64	Sacramento	Observation	Yes	450	Y	NOT AVAILABLE	Active	38.70005	-121.35288
33	Monument (D)	Not Available	48033	387000N1213529W004	Sacramento Groundwater Authority	North American	5-021.64	Sacramento	Observation	Yes	544	Y	NOT AVAILABLE	Active	38.70005	-121.35288
34	SCWA_SGA_010	10N06E21F002M	33087	387092N1213300W001	Sacramento Groundwater Authority	North American	5-021.64	Sacramento	Residential	No	144	N	NOT AVAILABLE	Active	38.7092	-121.33
35	Poker (A)	Not Available	48034	387117N1213327W001	Sacramento Groundwater Authority	North American	5-021.64	Sacramento	Observation	Yes	134	Y	NOT AVAILABLE	Active	38.71174	-121.33271
35	Poker (B)	Not Available	48035	387117N1213327W002	Sacramento Groundwater Authority	North American	5-021.64	Sacramento	Observation	Yes	176	Y	NOT AVAILABLE	Active	38.71174	-121.33271
35	Poker (C)	Not Available	48036	387117N1213327W003	Sacramento Groundwater Authority	North American	5-021.64	Sacramento	Observation	Yes	320	Y	NOT AVAILABLE	Active	38.71174	-121.33271
35	Poker (D)	Not Available	48037	387117N1213327W004	Department of Water Resources	North American	5-021.64	Sacramento	Observation	Yes	470	Y	NOT AVAILABLE	Active	38.71174	-121.33271
36	SCWA_SGA_006	10N04E23A001M	32580	387138N1215047W001	Sacramento County	North American	5-021.64	Sacramento	Industrial	No	85	N	NOT AVAILABLE	Active	38.7138	-121.5047
37	SUT-P4	11N04E04N001M		388260N1215394W001	Department of Water Resources	North American	5-021.64	Sutter	Observation		305				38.826	-121.5394
37	SUT-P3	11N04E04N002M		388260N1215394W002	Department of Water Resources	North American	5-021.64	Sutter	Observation		195				38.826	-121.5394
37	SUT-P2	11N04E04N003M		388260N1215394W003	Department of Water Resources	North American	5-021.64	Sutter	Observation		120				38.826	-121.5394
37	SUT-P1	11N04E04N004M		388260N1215394W004	Department of Water Resources	North American	5-021.64	Sutter	Observation		980				38.826	-121.5394
38	Lone Oak Park	10N05E13F001M	48043	387216N1213842W001	Department of Water Resources	North American	5-021.64	Sacramento	Observation	Yes	166	Y	NOT AVAILABLE	Active	38.72163	-121.38417
39	AB-1 deep	12N04E03N001M		389116N1215238W001	Department of Water Resources	North American	5-021.64	Sutter	Observation		980				38.9116	-121.5238
39	AB-1 middle-deep	12N04E03N002M		389116N1215238W002	Department of Water Resources	North American	5-021.64	Sutter	Observation		710				38.9116	-121.5238
39	AB-1 shallow	12N04E03N004M		389116N1215238W003	Department of Water Resources	North American	5-021.64	Sutter	Observation		190				38.9116	-121.5238
SI No.	Local Well Number	State Well Number	CASGEM Well ID	CASGEM Station ID	Monitoring Entity	GW Basin Name	GW Basin Code	County	Well Use	CASGEM Well	Total Well Depth	Well Construction	Well Completion	Status	Latitude(Y)	Longitude(X)
39	AB-1 middle-shallow	12N04E03N003M		389117N1215238W001	Department of Water Resources	North American	5-021.64	Sutter	Observation		530				38.9116	-121.5238
40	Antelope North (A)	Not Available	48038	387228N1213298W001	Department of Water Resources	North American	5-021.64	Sacramento	Observation	Yes	283	Y	NOT AVAILABLE	Active	38.722803	-121.329755
40	Antelope North (B)	Not Available	48039	387228N1213298W002	Sacramento Groundwater Authority	North American	5-021.64	Sacramento	Observation	Yes	473	Y	NOT AVAILABLE	Active	38.722803	-121.329755
41	WPMW-5A	Not Available	51280	387331N1213610W001	City of Roseville	North American	5-021.64	Placer	Observation	Yes	100	Y	e0266541	Active	38.733106	-121.360994
41	WPMW-5B	Not Available	51281	387331N1213610W002	City of Roseville	North American	5-021.64	Placer	Observation	Yes	650	Y	e0266541	Active	38.733106	-121.360994
42	WPMW-7A	Not Available	51283	387512N1212390W001	City of Roseville	North American	5-021.64	Placer	Observation	Yes	45	Y	e0265730	Active	38.751194	-121.239
43	WPMW-8A	Not Available	51284	387510N1212390W001	City of Roseville	North American	5-021.64	Placer	Observation	Yes	50	Y	e0265733	Active	38.750989	-121.23895
43	WPMW-8B	Not Available	51285	387510N1212390W002	City of Roseville	North American	5-021.64	Placer	Observation	Yes	115					

46	SVMW West - 1A	Not Available	48573	387623N1213915W001	City of Roseville	North American	5-021.64	Placer	Observation	Yes	145	Y		NOT AVAILABLE	Active	38.762324	-121.39153
46	SVMW West - 1B	Not Available	48574	387623N1213915W002	City of Roseville	North American	5-021.64	Placer	Observation	Yes	560	Y		NOT AVAILABLE	Active	38.762325	-121.39153
46	SVMW West - 1C	Not Available	48575	387623N1213915W003	Department of Water Resources	North American	5-021.64	Placer	Observation	Yes	750	Y		NOT AVAILABLE	Active	38.762325	-121.391529
48	WPMW-4A	Not Available	48567	387755N1212753W001	City of Roseville	North American	5-021.64	Placer	Observation	Yes	145	Y		NOT AVAILABLE	Active	38.775536	-121.287254
48	WPMW-4B	Not Available	48568	387755N1212753W002	City of Roseville	North American	5-021.64	Placer	Observation	Yes	300	Y		NOT AVAILABLE	Active	38.775535	-121.275255
49	WPMW-1A	Not Available	48560	387786N1213737W001	City of Roseville	North American	5-021.64	Placer	Observation	Yes	120	Y		NOT AVAILABLE	Active	38.778603	-121.373698
49	WPMW-1B	Not Available	48561	387786N1213737W002	Department of Water Resources	North American	5-021.64	Placer	Observation	Yes	480	Y		NOT AVAILABLE	Active	38.778603	-121.373697
49	WPMW-1C	Not Available	48562	387786N1213737W003	Department of Water Resources	North American	5-021.64	Placer	Observation	Yes	545	Y		NOT AVAILABLE	Active	38.778602	-121.373698
50	W-77MW-A	Not Available	51294	387816N1213870W001	City of Roseville	North American	5-021.64	Placer	Observation	Yes	516	Y		NOT AVAILABLE	Active	38.781581	-121.38702
50	W-77MW-B	Not Available	51295	387816N1213870W002	City of Roseville	North American	5-021.64	Placer	Observation	Yes	604	Y		NOT AVAILABLE	Active	38.781581	-121.38702
51	O'Brien well	11N05E23B001M	11223	387943N1213856W001	City of Roseville	North American	5-021.64	Placer	Residential	No	195	N		NOT AVAILABLE	Active	38.7943	-121.3856
52	CVMW-1A	Not Available	48569	387957N1213813W001	City of Roseville	North American	5-021.64	Placer	Observation	Yes	285	Y		NOT AVAILABLE	Active	38.795655	-121.38126
52	CVMW-1B	Not Available	48571	387957N1213813W002	Department of Water Resources	North American	5-021.64	Placer	Observation	Yes	495	Y		NOT AVAILABLE	Active	38.795654	-121.381258
52	CVMW-1C	Not Available	48572	387957N1213813W003	Department of Water Resources	North American	5-021.64	Placer	Observation	Yes	590	Y		NOT AVAILABLE	Active	38.795655	-121.381258
53	South Sutter WD	11N04E15Q001M	10508	387971N1215119W001	SUTTER, SOUTH, WATER DISTRICT	North American	5-021.64	Sutter	Unknown	Yes	-	N		NOT AVAILABLE	Active	38.7971	-121.5119
54	South Sutter WD	11N05E18R001M	11221	387977N1214521W001	South Sutter Water District	North American	5-021.64	Placer	Irrigation	Yes	-	N		NOT AVAILABLE	Active	38.7977	-121.4521
55	South Sutter WD	11N04E13R001M	10507	387982N1214704W001	South Sutter Water District	North American	5-021.64	Sutter	Irrigation	Yes	-	N		NOT AVAILABLE	Active	38.7982	-121.4704
56	DCMW-3	Not Available	51293	388027N1213384W001	City of Roseville	North American	5-021.64	Placer	Observation	Yes	520	Y		NOT AVAILABLE	Active	38.80271	-121.338432
57	DCMW-1	Not Available	51291	388058N1213355W001	City of Roseville	North American	5-021.64	Placer	Observation	Yes	455	Y		NOT AVAILABLE	Active	38.805757	-121.335503
58	DCMW-2	Not Available	51292	388063N1213354W001	City of Roseville	North American	5-021.64	Placer	Observation	Yes	437	Y		NOT AVAILABLE	Active	38.806291	-121.335415
59	Tinker MW	Not Available	51290	388116N1213054W001	Department of Water Resources	North American	5-021.64	Placer	Observation	Yes	177	Y		NOT AVAILABLE	Active	38.811594	-121.305387
60	WPMW-2A	Not Available	48563	388145N1213491W001	City of Roseville	North American	5-021.64	Placer	Observation	Yes	230	Y		NOT AVAILABLE	Active	38.814497	-121.349144
60	WPMW-2B	Not Available	48564	388145N1213491W002	City of Roseville	North American	5-021.64	Placer	Observation	Yes	425	Y		NOT AVAILABLE	Active	38.814497	-121.349143
61	Sutter County MW-5A	11N03E02Q002M	47776	388235N1216079W001	Sutter County	North American	5-021.64	Sutter	Observation	Yes	170	Y		E0123539	Active	38.823235	-121.60763
61	Sutter County MW-5B	11N03E02Q003M	47777	388235N1216079W002	Sutter County	North American	5-021.64	Sutter	Observation	Yes	675	Y		E0123539	Active	38.823235	-121.60763
61	Sutter County MW-5C	11N03E02Q004M	47778	388235N1216079W003	Sutter County	North American	5-021.64	Sutter	Observation	Yes	930	Y		E0123539	Active	38.823235	-121.60763
61	Sutter County MW-5D	11N03E02Q005M	47779	388235N1216079W004	Sutter County	North American	5-021.64	Sutter	Observation	Yes	1225	Y		E0123539	Active	38.8235	-121.6079
62	South Sutter WD	12N04E34H001M	17037	388458N1215100W001	SUTTER, SOUTH, WATER DISTRICT	North American	5-021.64	Sutter	Residential	Yes	-	N		NOT AVAILABLE	Active	38.8458	-121.51
63	WPMW-3A	Not Available	48565	388476N1212872W001	Department of Water Resources	North American	5-021.64	Placer	Observation	Yes	53	Y		NOT AVAILABLE	Active	38.847609	-121.287189
63	WPMW-3B	Not Available	48566	388476N1212872W002	City of Roseville	North American	5-021.64	Placer	Observation	Yes	140	Y		NOT AVAILABLE	Active	38.847609	-121.287187
64	South Sutter WD	12N04E29J001M	25784	388555N1215468W001	South Sutter Water District	North American	5-021.64	Sutter	Irrigation	Yes	-	N		NOT AVAILABLE	Active	38.8555	-121.5468
65	MW 1-2	Not Available	49928	388604N1213544W002	Department of Water Resources	North American	5-021.64	Placer	Observation	Yes	318	Y		NOT AVAILABLE	Active	38.860383	-121.354383
65	MW 1-4	Not Available	49930	388604N1213544W004	Department of Water Resources	North American	5-021.64	Placer	Observation	Yes	92	Y		NOT AVAILABLE	Active	38.860383	-121.354383
66	MW 5-1	Not Available	49937	388826N1213078W001	Department of Water Resources	North American	5-021.64	Placer	Observation	Yes	100	Y		NOT AVAILABLE	Active	38.882583	-121.30775
66	MW 5-2	Not Available	49938	388826N1213078W002	Department of Water Resources	North American	5-021.64	Placer	Observation	Yes	62	Y		NOT AVAILABLE	Active	38.882583	-121.30775
69	South Sutter WD	12N04E16A004M	17031	388944N1215257W001	Department of Water Resources	North American	5-021.64	Sutter	Irrigation	Yes	-	N		NOT AVAILABLE	Active	38.8944	-121.5257
70	MW 3-2	Not Available	49935	388971N1213301W002	City of Lincoln	North American	5-021.64	Placer	Observation	Yes	75	Y		NOT AVAILABLE	Active	38.897133	-121.330083
71	WCMSS	Not Available	52461	386280N1213493W001	Department of Water Resources	North American	5-021.64	Sacramento	Observation	Yes	170	Y		WCR2016-005904	Active	38.62799	-121.34925
71	WCMMSM	Not Available	52462	386280N1213493W002	Department of Water Resources	North American	5-021.64	Sacramento	Observation	Yes	290	Y		WCR2016-005902	Active	38.62799	-121.34925
71	WCMMSD	Not Available	52463	386280N1213493W003	Department of Water Resources	North American	5-021.64	Sacramento	Observation	Yes	530	Y		WCR2016-005899	Active	38.62799	-121.34925
72	South Sutter WD	12N04E10D002M	17027	389075N1215237W001	SUTTER, SOUTH, WATER DISTRICT	North American	5-021.64	Sutter	Unknown	Yes	-	N		NOT AVAILABLE	Active	38.9075	-121.5237
73	South Sutter WD	12N04E05R004M	17025	389130N1215441W001	South Sutter Water District	North American	5-021.64	Sutter	Residential	Yes	90	N		NOT AVAILABLE	Active	38.913	-121.5441
74	11N05E16H001M	11N05E16H001M		388029N1214145W001	Department of Water Resources	North American	5-021.64	Placer	Irrigation	Yes	460					38.8029	-121.4145
75	MW 2-1	Not Available	49931	389255N1213566W001	City of Lincoln	North American	5-021.64	Placer	Observation	Yes	310	Y		NOT AVAILABLE	Active	38.925467	-121.356633
75	MW 2-2	Not Available	49932	389255N1213566W002	City of Lincoln	North American	5-021.64	Placer	Observation	Yes	170	Y		NOT AVAILABLE	Active	38.925467	-121.356633
76	South Sutter WD	13N04E35Q002M	35624	389255N1214969W001	South Sutter Water District	North American	5-021.64	Sutter	Unknown	Yes	-	N		NOT AVAILABLE	Active	38.9255	-121.4969
77	South Sutter WD	13N05E31K001M	40137	389327N1214594W001	Department of Water Resources	North American	5-021.64	Sutter	Unknown	Yes	393	N		NOT AVAILABLE	Active	38.9327	-121.4594
78	South Sutter WD	13N04E32G001M	35623	389328N1215489W001	SUTTER, SOUTH, WATER DISTRICT	North American	5-021.64	Sutter	Irrigation	Yes	-	N		NOT AVAILABLE	Active	38.9328	-121.5489
79	South Sutter WD	13N04E28R001M	17195	389410N1215254W001	Department of Water Resources	North American	5-021.64	Sutter	Irrigation	Yes	-	N		NOT AVAILABLE	Active	38.941	-121.5254
80	Cemetery	Not Available	51328	389740N1213606W001	Placer County	North American	5-021.64	Placer	Irrigation	Yes	111	Y		NOT AVAILABLE	Active	38.974027	-121.360615
81	MW-2	Not Available	51331	389764N1213710W001	Department of Water Resources	North American	5-021.64	Placer	Observation	Yes	45	Y		NOT AVAILABLE	Active	38.976427	-121.371001
81	MW-3	Not Available	51332	389774N1213728W001	Placer County	North American	5-021.64	Placer	Observation	Yes	35	Y		NOT AVAILABLE	Active	38.977408	-121.372844
81	MW-1	Not Available	51330	389785N1213713W001	Department of Water Resources	North American	5-021.64	Placer	Observation	Yes	40	Y		NOT AVAILABLE	Active	38.97846	-121.37132
SI No. Local Well Number State Well Number CASGEM Well ID CASGEM Station ID Monitoring Entity GW Basin Name GW Basin Code County Well Use CASGEM Well Total Well Depth Well Construction Well Completion Status Latitude(Y) Longitude(X)																	
82	Whyte A	Not Available	52475	387222N1212920W001	Department of Water Resources	North American	5-021.64	Placer	Observation	Yes	226	Y		e0303799	Active	38.722168	-121.29196
82	Whyte B	Not Available	52476	387222N1212920W002	Department of Water Resources	North American	5-021.64	Placer	Observation	Yes	306	Y		e0303799	Active	38.722168	-121.29196
83	South Sutter WD	13N05E18C001M	17209	389834N1214655W001	South Sutter Water District	North American	5-021.64	Sutter	Irrigation	Yes	210	N		NOT AVAILABLE	Active	38.9834	-121.4655
84	Spencer	Not Available	52555	389867N1213654W002	Department of Water Resources	North American	5-021.64	Placer	Residential	Yes	107	Y		101157	Active	38.986724	-121.36542
85	13N05E09R001M	13N05E09R001M		389873N1214156W001	Department of Water Resources	North American	5-021.64	Sutter	Irrigation	Yes	-	N				38.9873	-121.4156
86	12N05E06R001M	12N05E06R001M		389128N1214522W001	Department of Water Resources	North American	5-021.64	Placer	Irrigation	Yes	-	N				38.9128	-121.4522
87	12N04E24M002M	12N04E24M002M		388710N1214870W001	Department of Water Resources	North American	5-021.64	Sutter	Irrigation	Yes	-	N				38.871	-121.487
88	11N03E03C002M	11N03E03C002M		388357N1216273W001	Department of Water Resources	North American	5-021.64	Sutter	Irrigation	Yes	-	N				38.8357	-121.6273
89	Roseview-MW315	Not Available			Sacramento Groundwater Authority	North American	5-021.64				315					38.718222	-121.327729
89	Roseview-MW465	Not Available			Sacramento Groundwater Authority	North American	5-021.64				465					38.718222	-121.327729
90	WPMW-11A	Not Available	54779	388882N1214005W002	Department of Water Resources	North American	5-021.64	Placer	Observation	Yes	162	Y		NOT AVAILABLE	Active	38.888164	-121.400463
90	WPMW-11B	Not Available	54780	388882N1214005W004	Department of Water Resources	North American	5-021.64	Placer	Observation	Yes	309	Y		NOT AVAILABLE	Active	38.888164	-121.400463
91	WPMW12-A	Not Available			Department of Water Resources	North American	5-021.64	Placer	Observation	Yes	300	Y		NOT AVAILABLE	Active	38.802639	-121.443216
91	WPMW12-B	Not Available			Department of Water Resources	North American	5-021.64	Placer	Observation	Yes	550	Y		NOT AVAILABLE	Active	38.802639	-121.443216

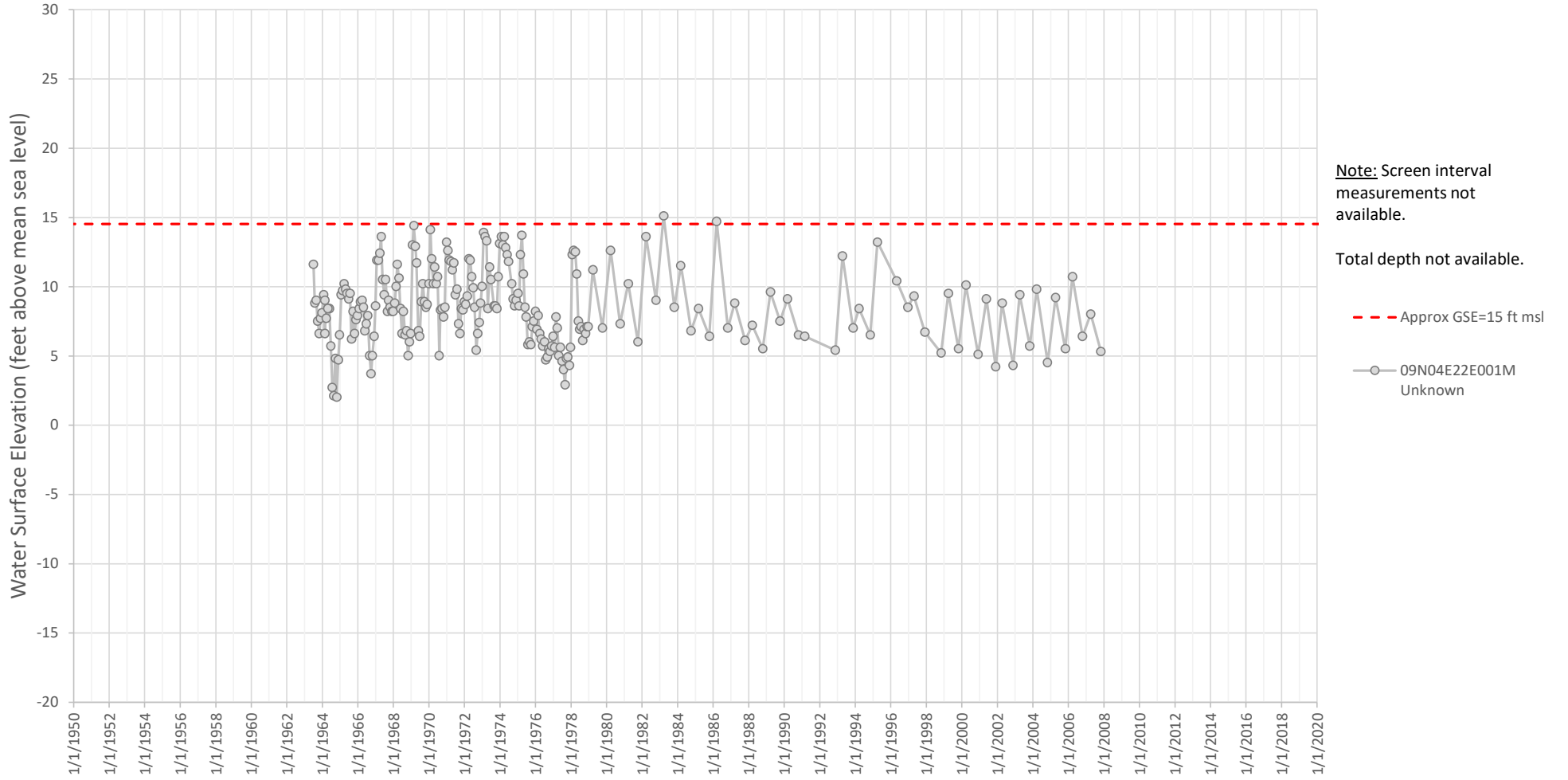
Local Well No. 08
SCWA_SGA_003
386061N1215313W001



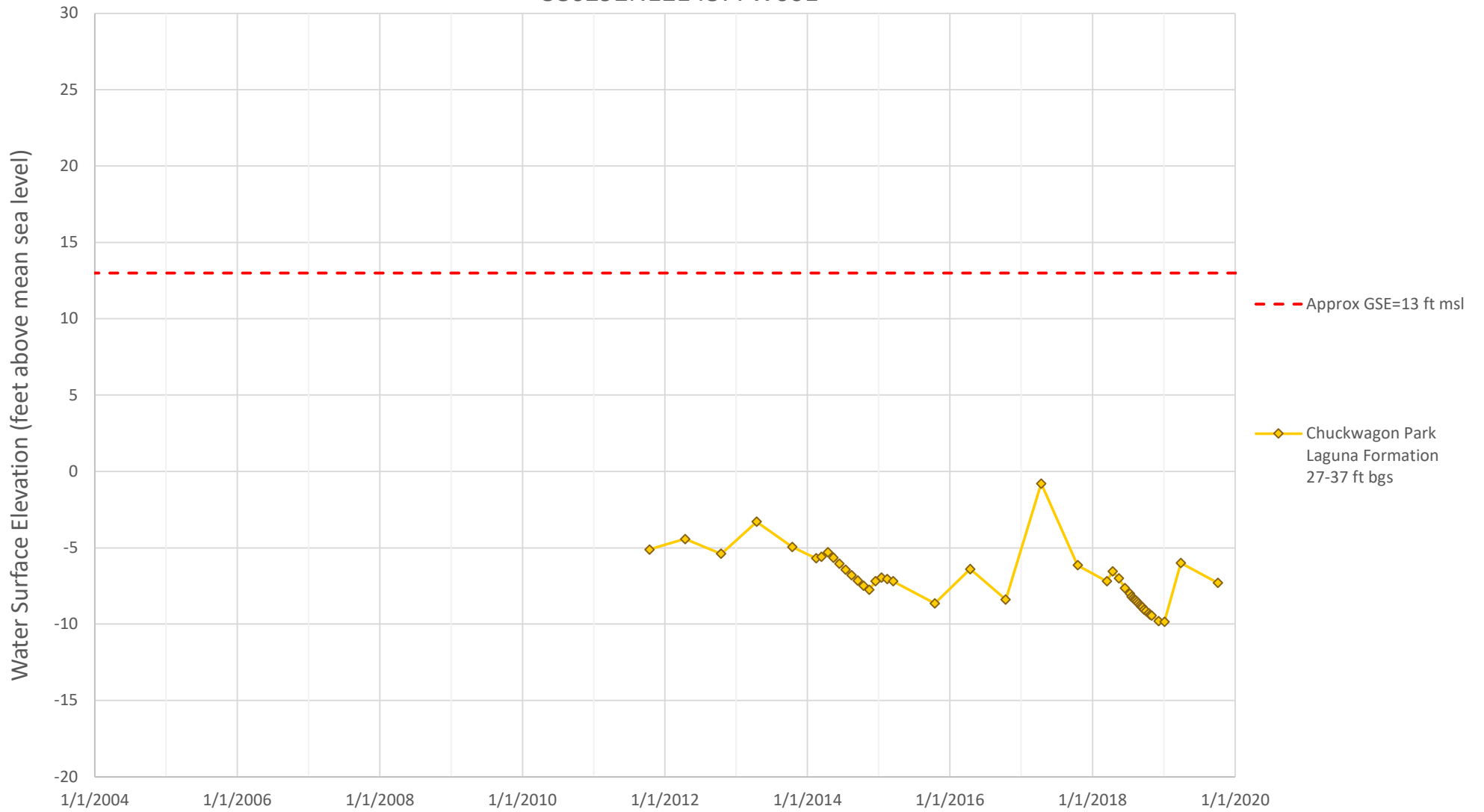
Local Well No. 11
Bannon Creek Park
386160N1215054W001



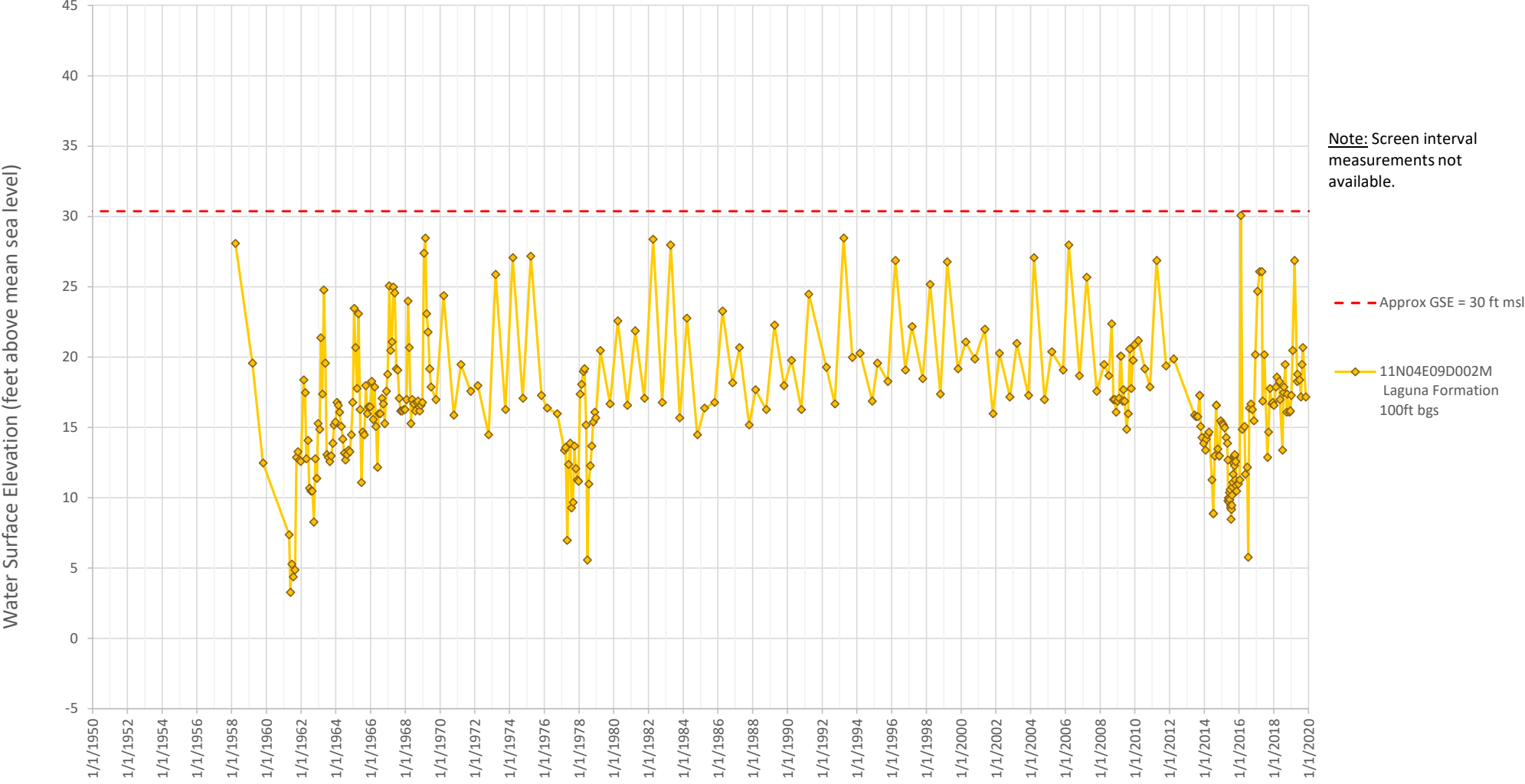
Local Well No. 12
09N04E22E001M
386199N1215386W001



Local Well No. 13
Chuckwagon Park
386292N1214877W001

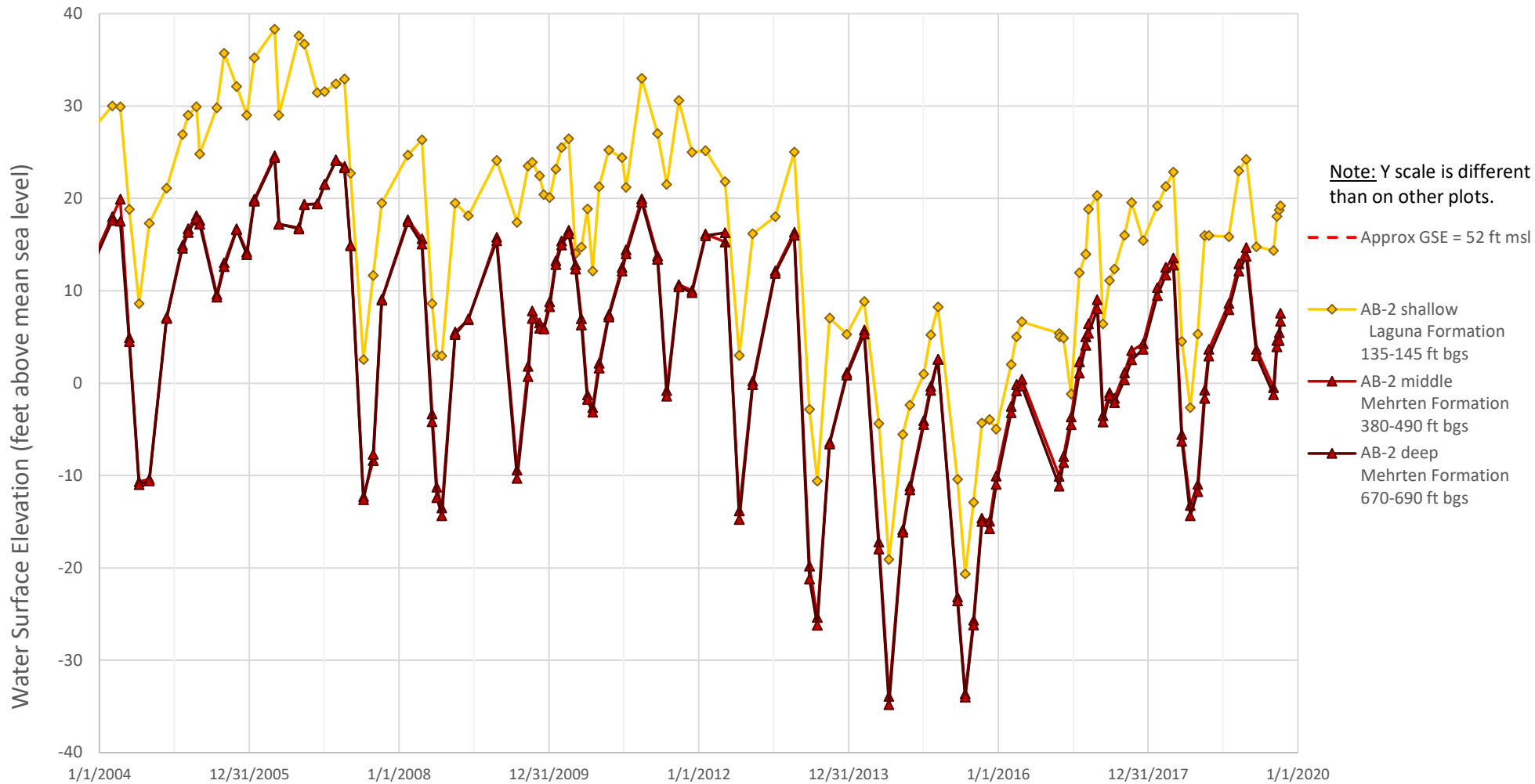


Local Well No. 15
11N04E09D002M
388208N1215397W001

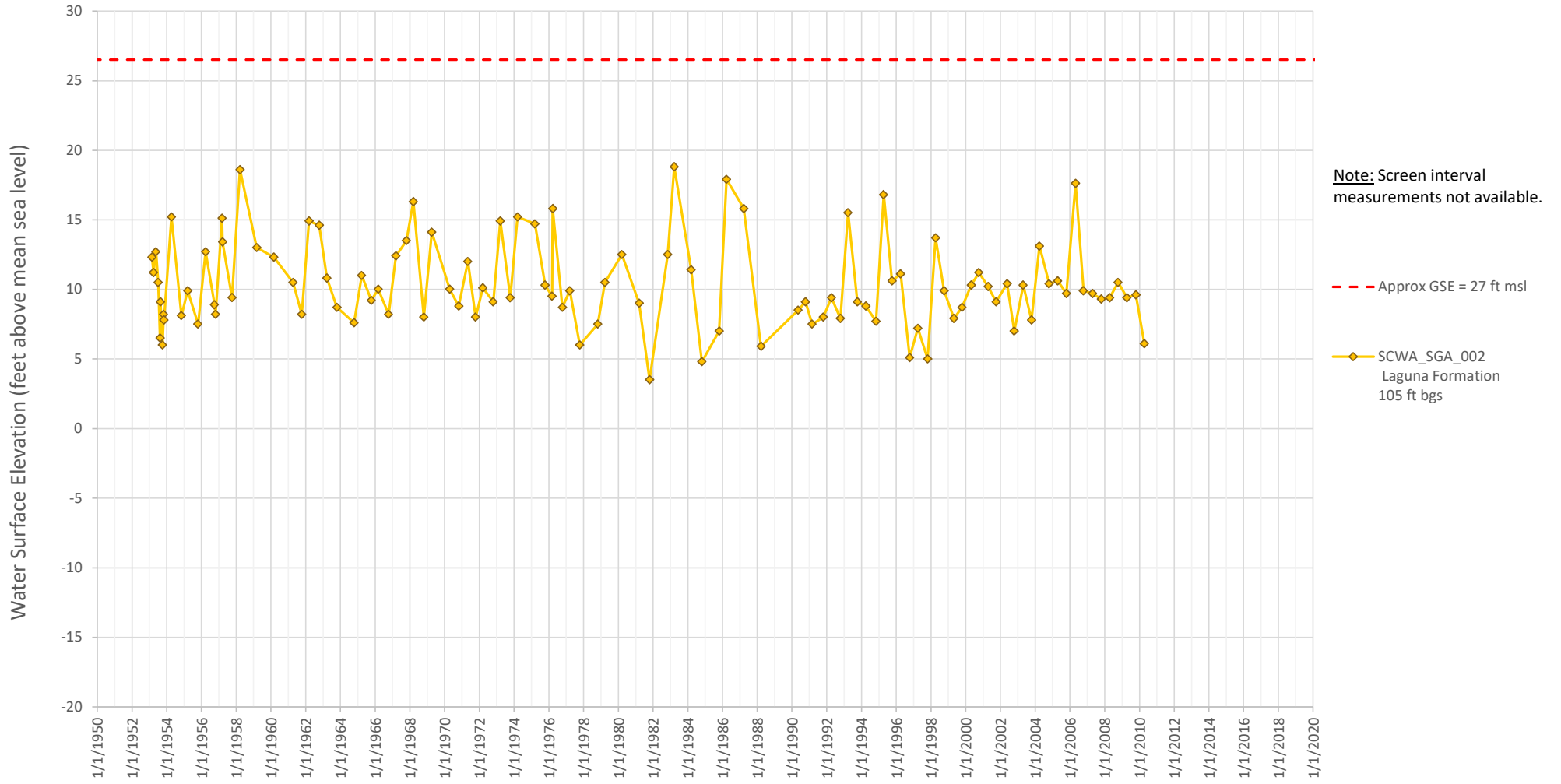


Note: Screen interval measurements not available.

Local Well No. 17
AB-2 Nested Well
388593N1214885W003, 388593N1214885W002, 388593N1214885W001

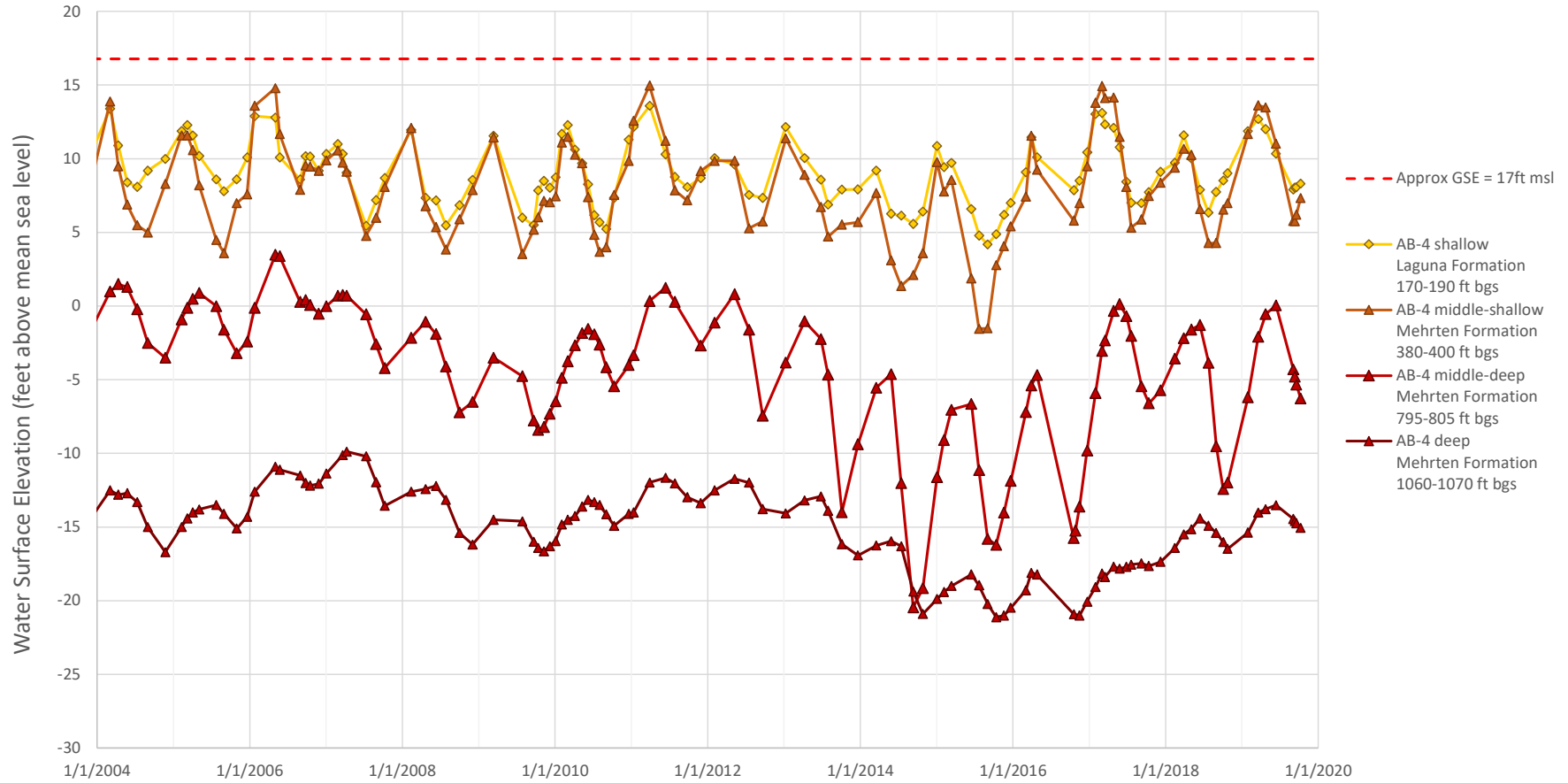


Local Well No. 18
SCWA_SGA_002
386489N1215679W001

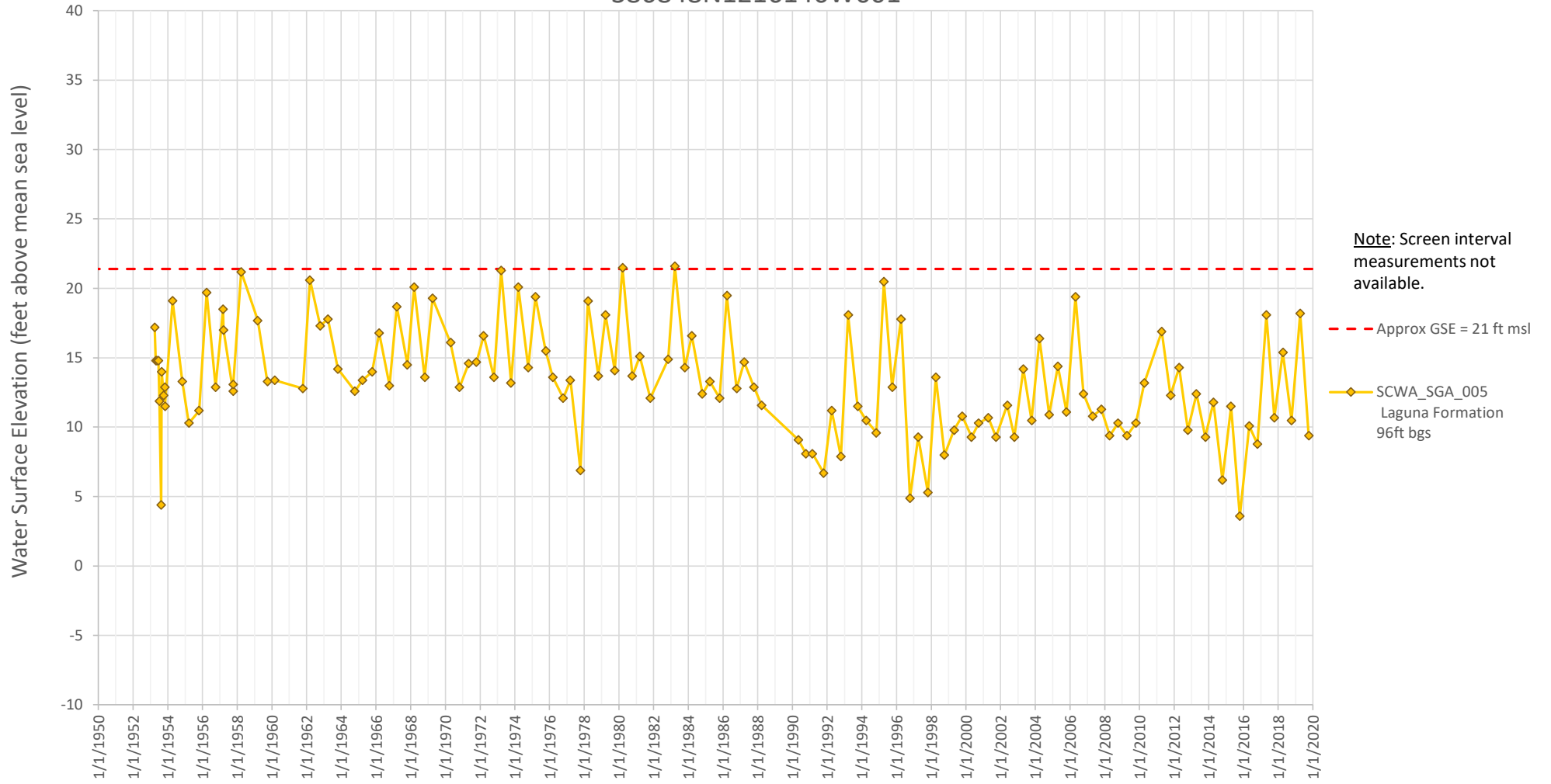


Local Well No. 22
AB-4 Nested Well

386782N1215943W004, 386782N1215943W003, 386782N1215943W002, 386782N1215943W001

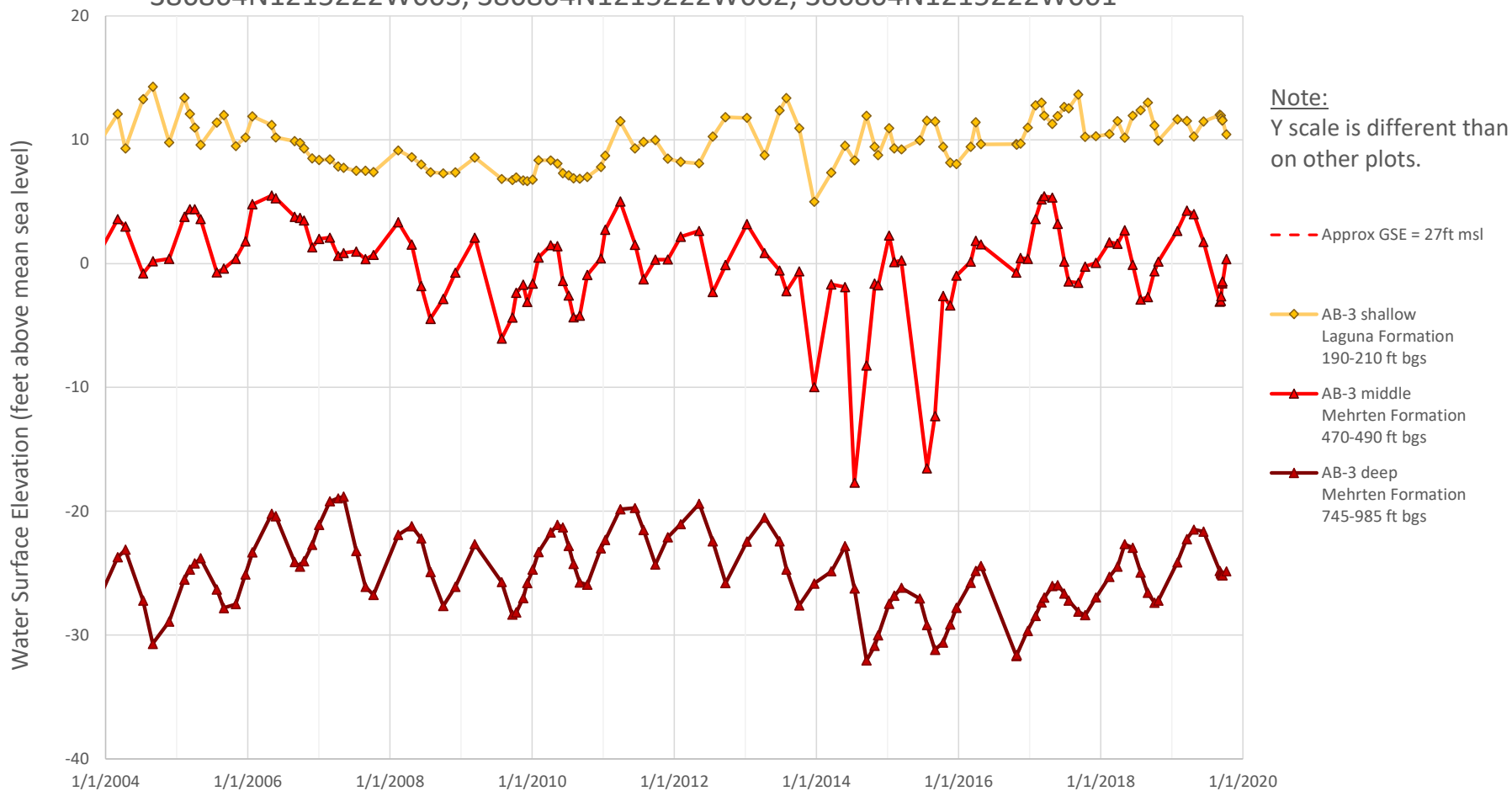


Local Well No. 26
SCWA_SGA_005
386848N1216146W001

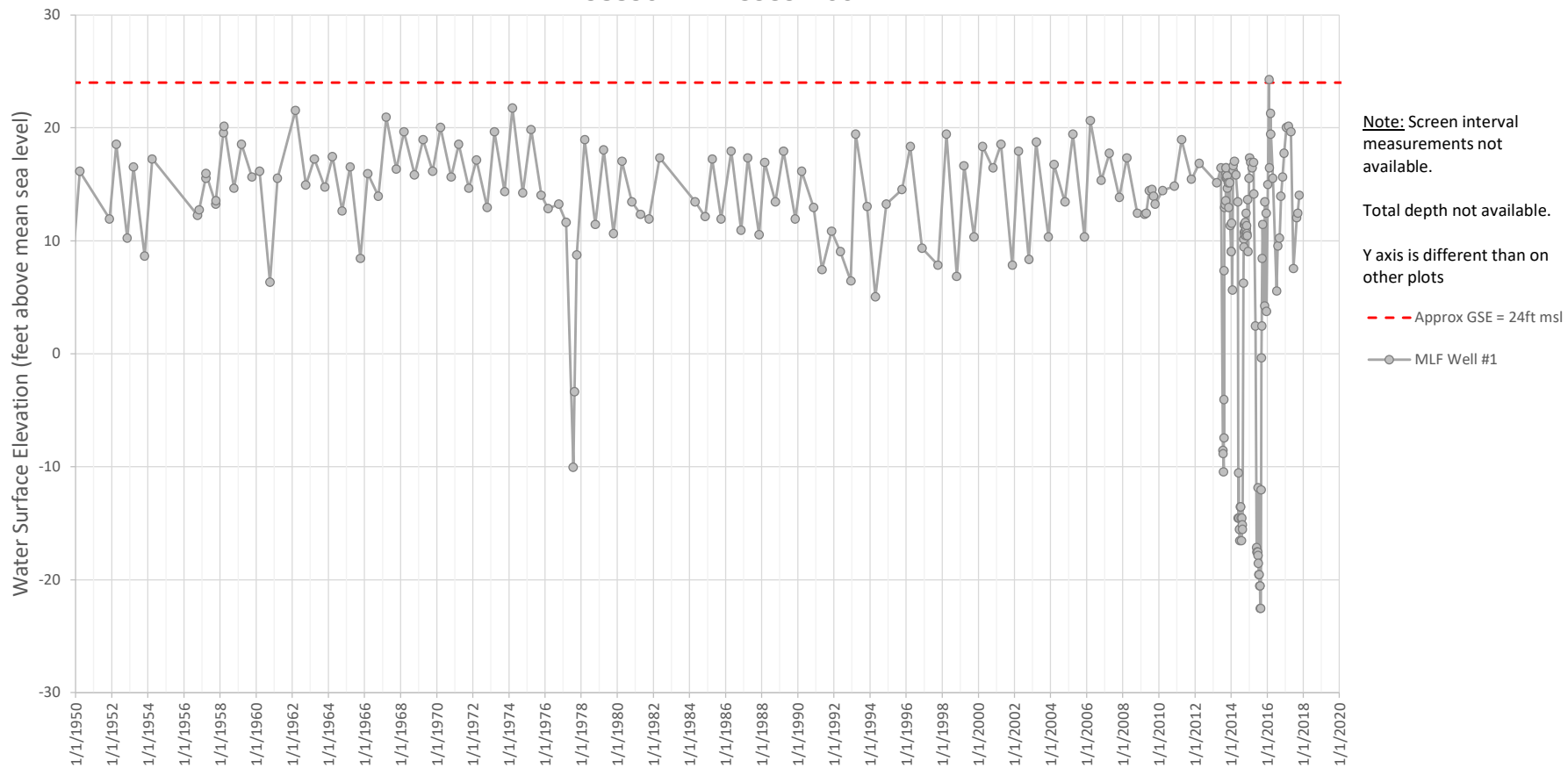


Local Well No.27
AB-3 Nested Well

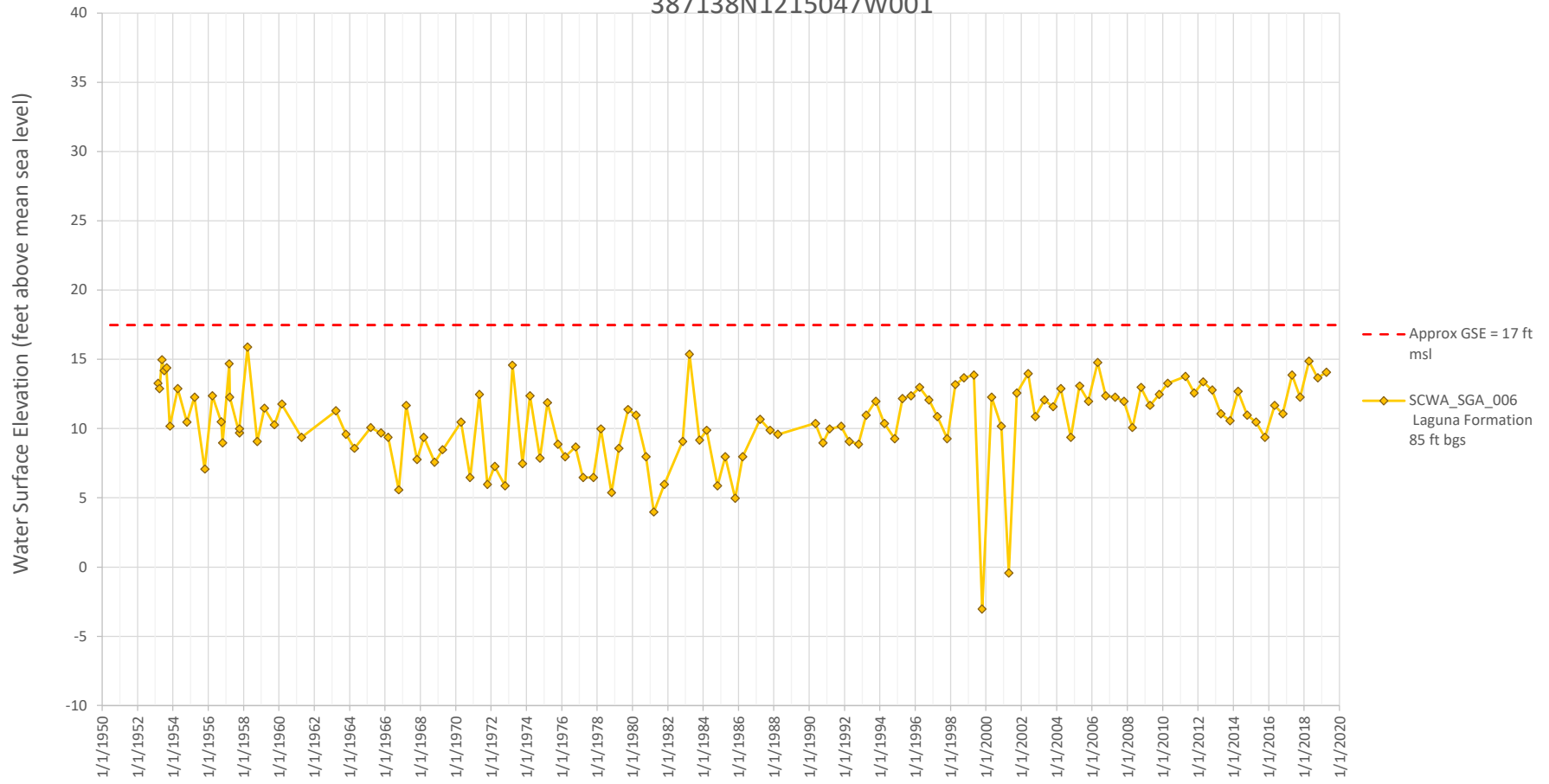
386864N1215222W003, 386864N1215222W002, 386864N1215222W001



Local Well No. 32
MLF Well #1
388361N1215959W001



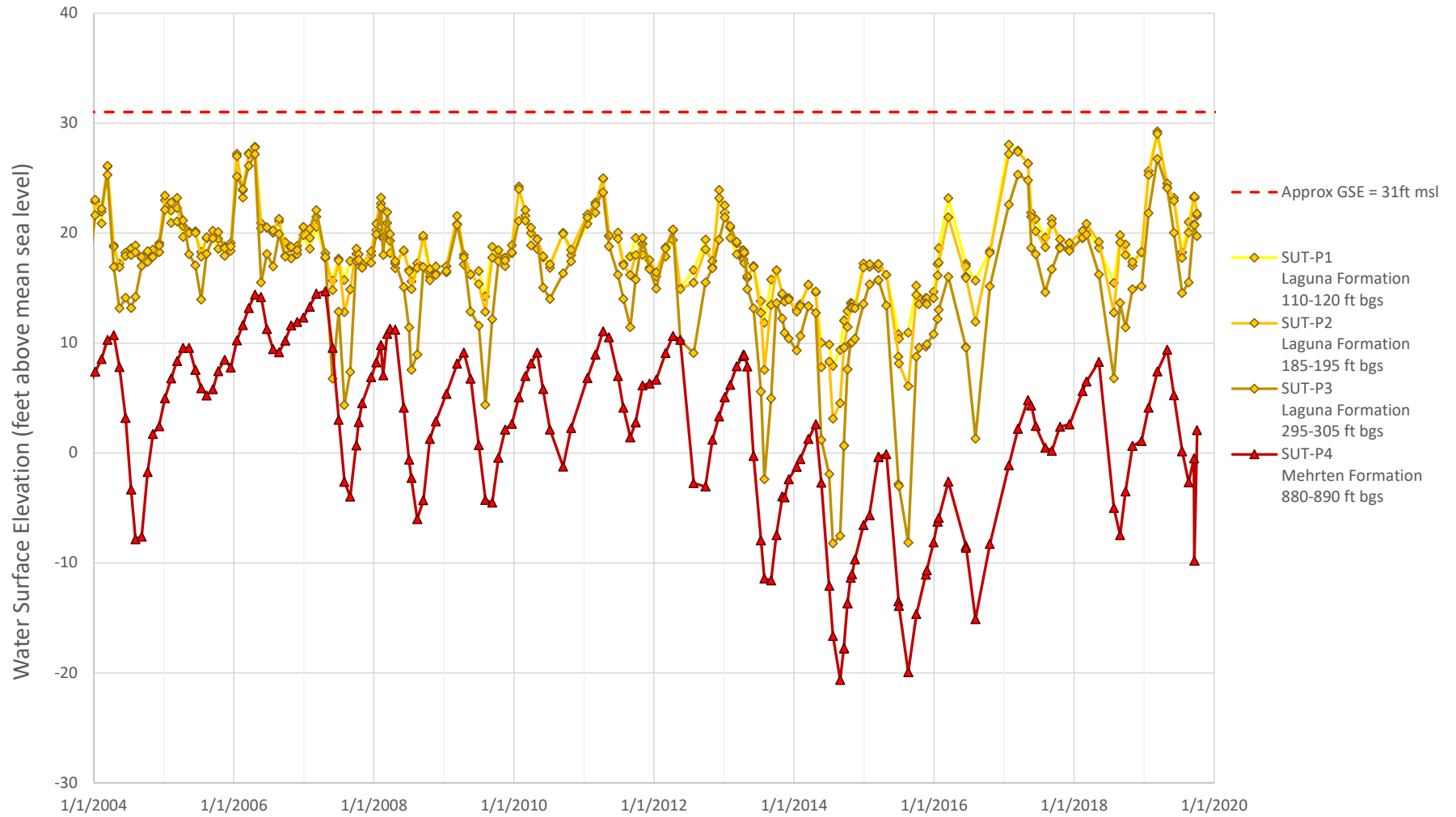
Local Well No. 36
SCWA_SGA_006
387138N1215047W001



Local Well No. 37

SUT-P1, SUT-P2, SUT-P3, SUT-P4

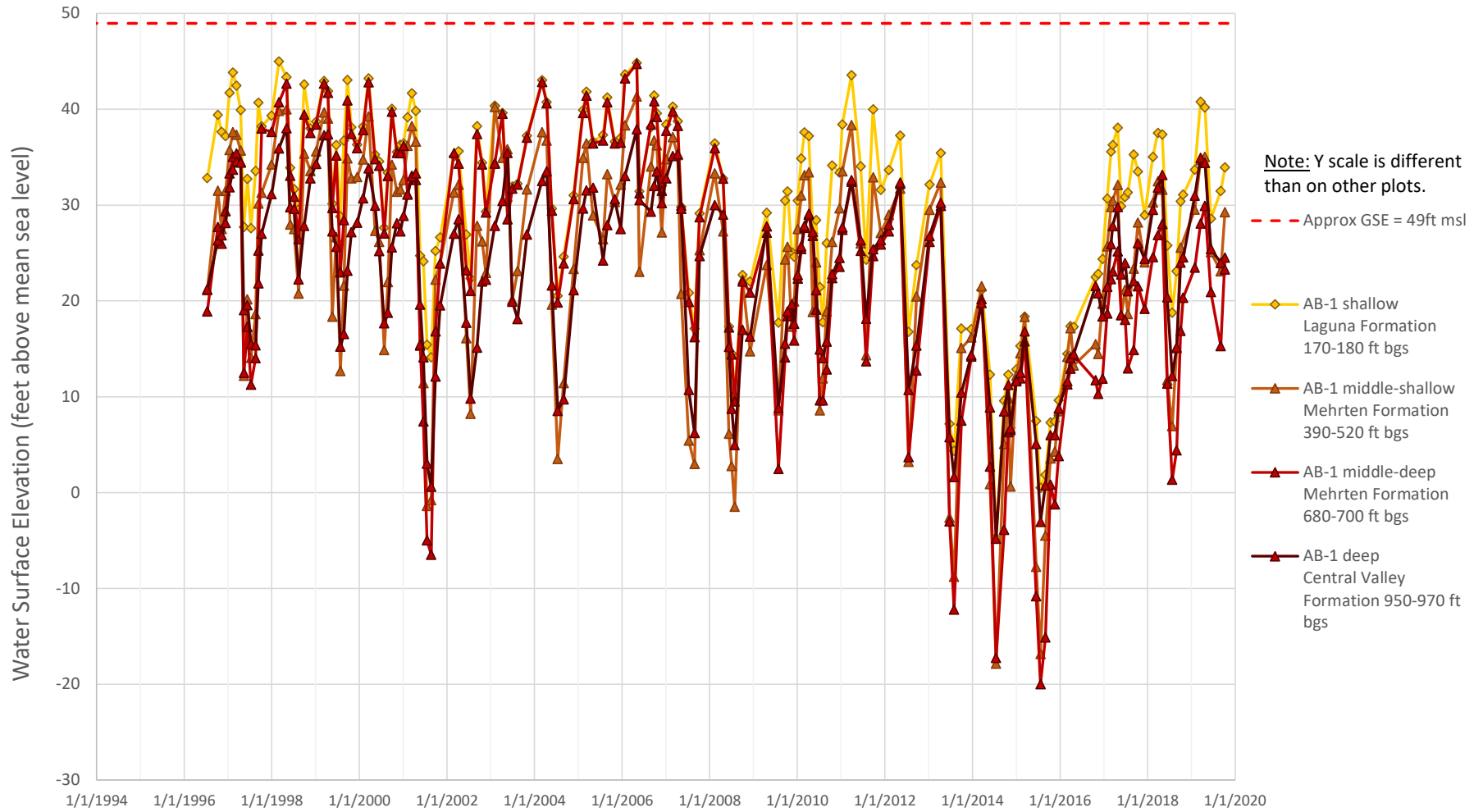
388260N1215394W004, 388260N1215394W003, 388260N1215394W001, 388260N1215394W001



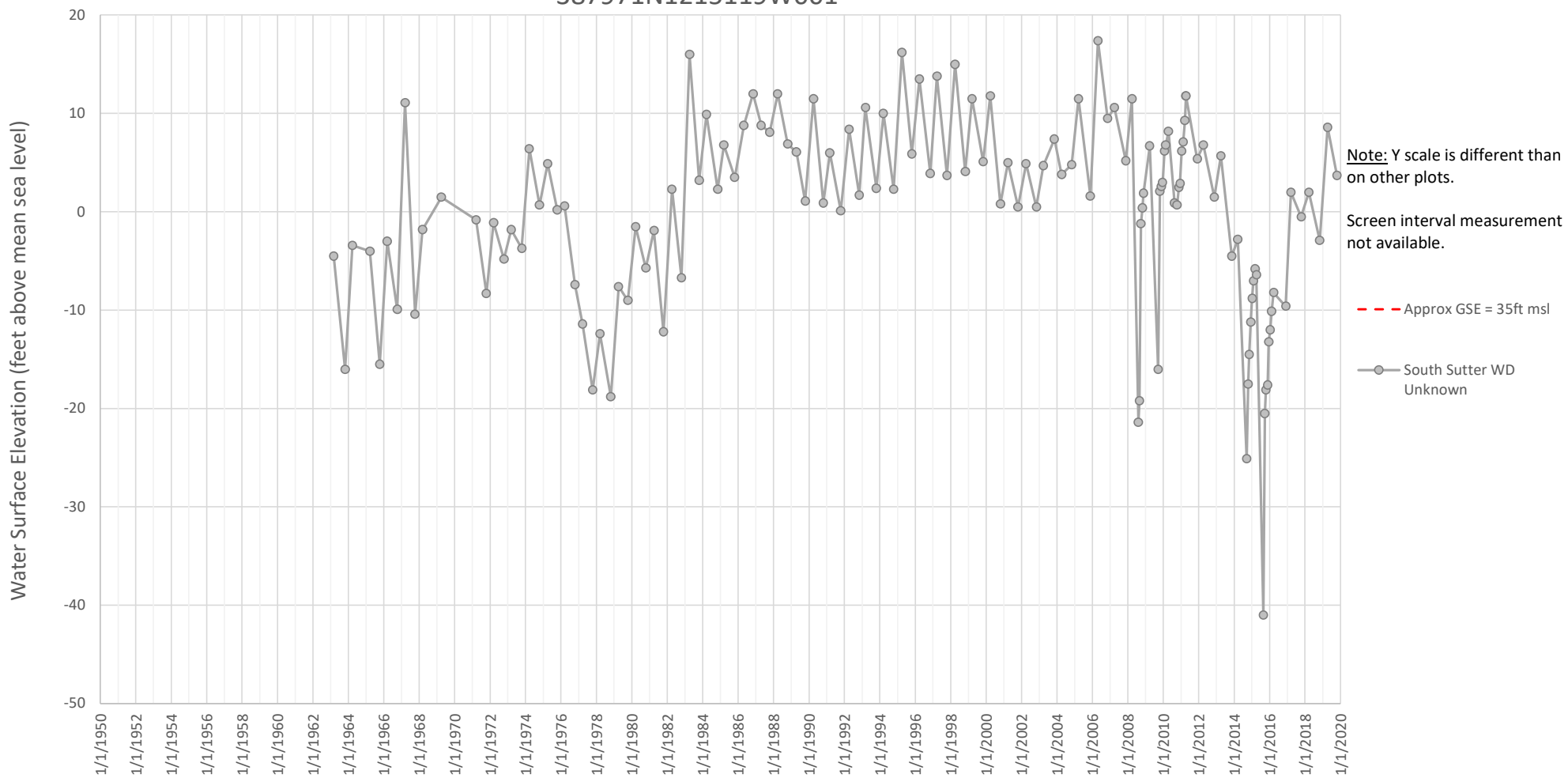
Local Well No. 39

AB-1 Nested Well

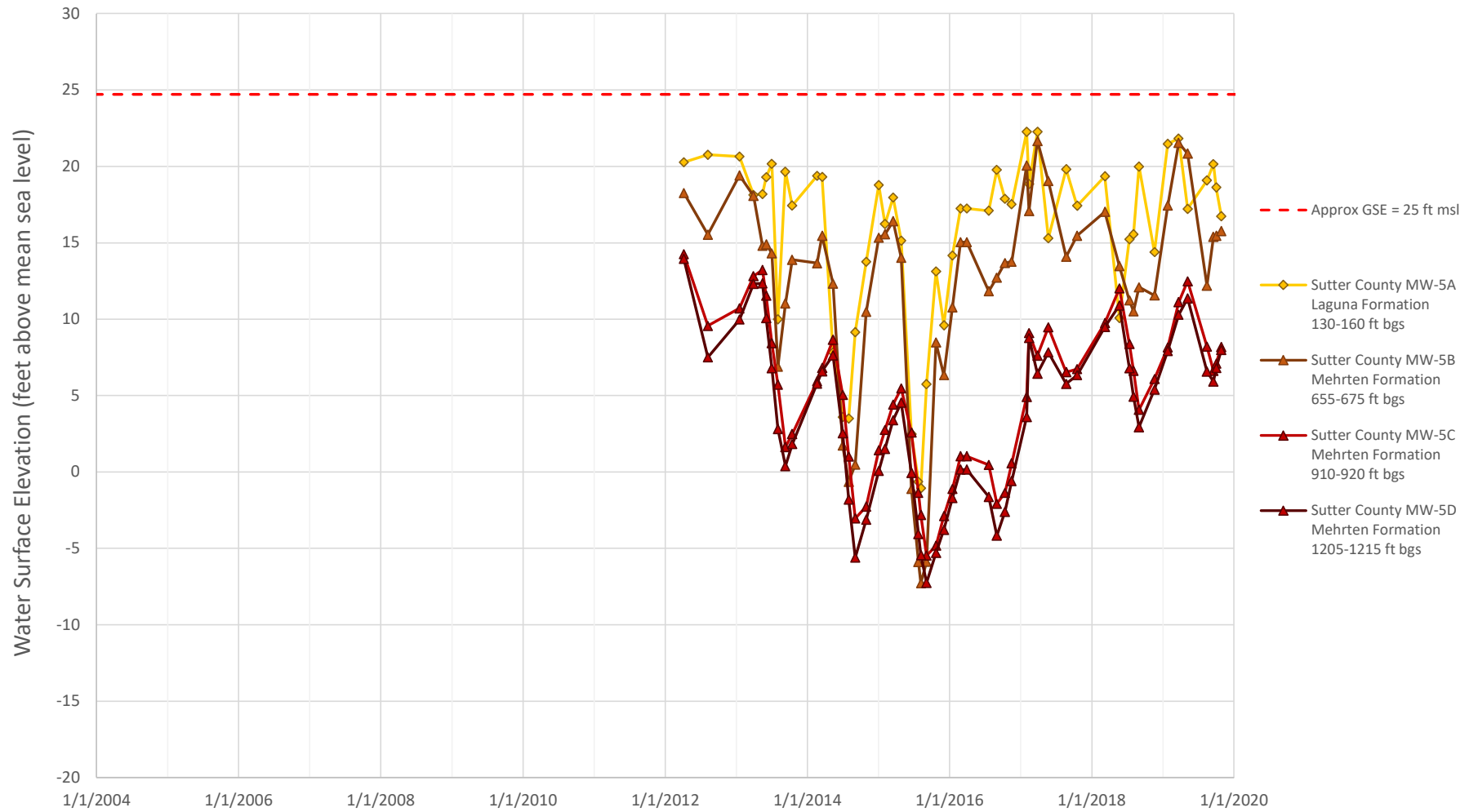
389116N1215238W003, 389117N1215238W001, 389116N1215238W002, 389116N1215238W001



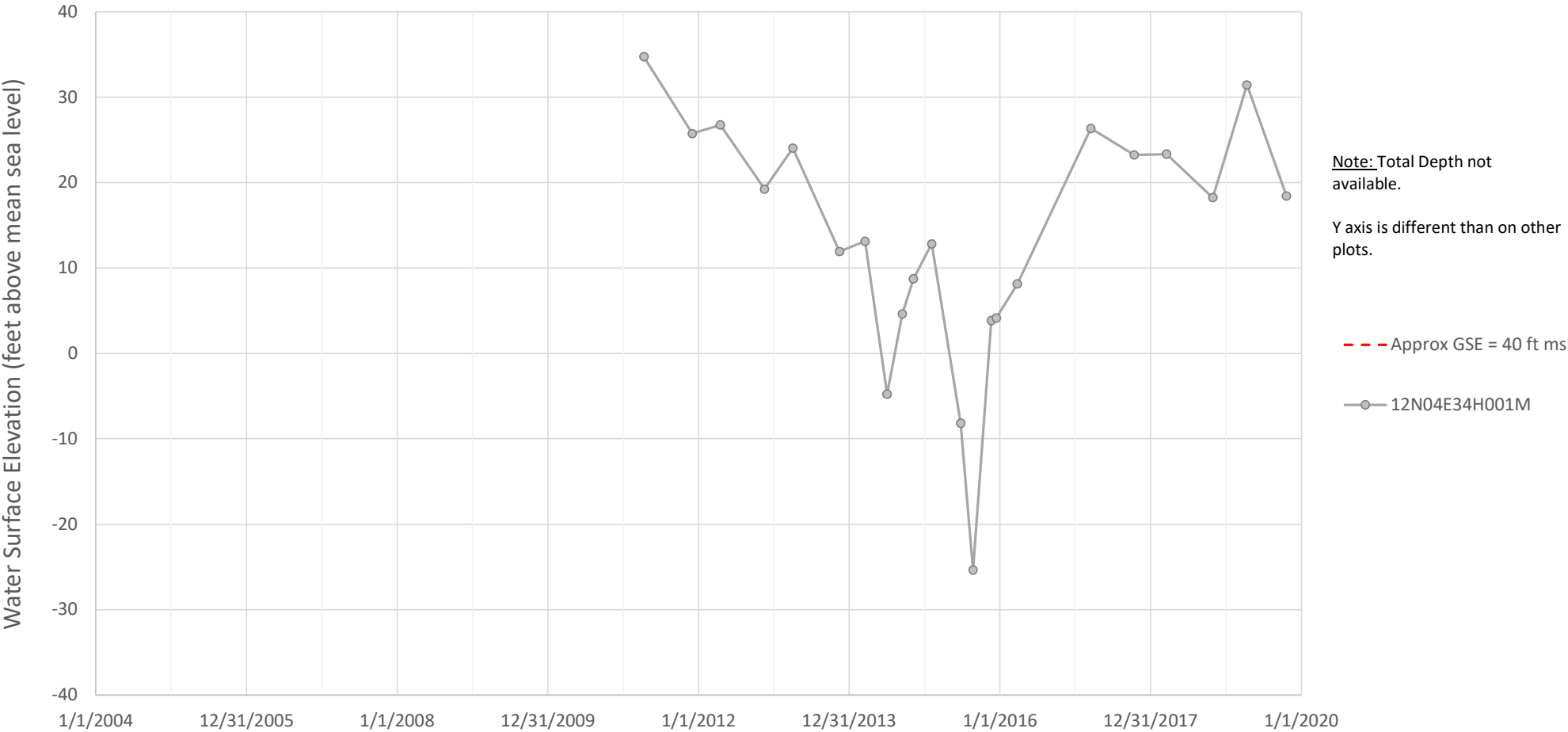
Local Well No. 53
South Sutter
387971N1215119W001



Local Well No. 61
Sutter County MW-5 Nested Well
388235N1216079W001, 388235N1216079W002, 388235N1216079W003, 388235N1216079W004



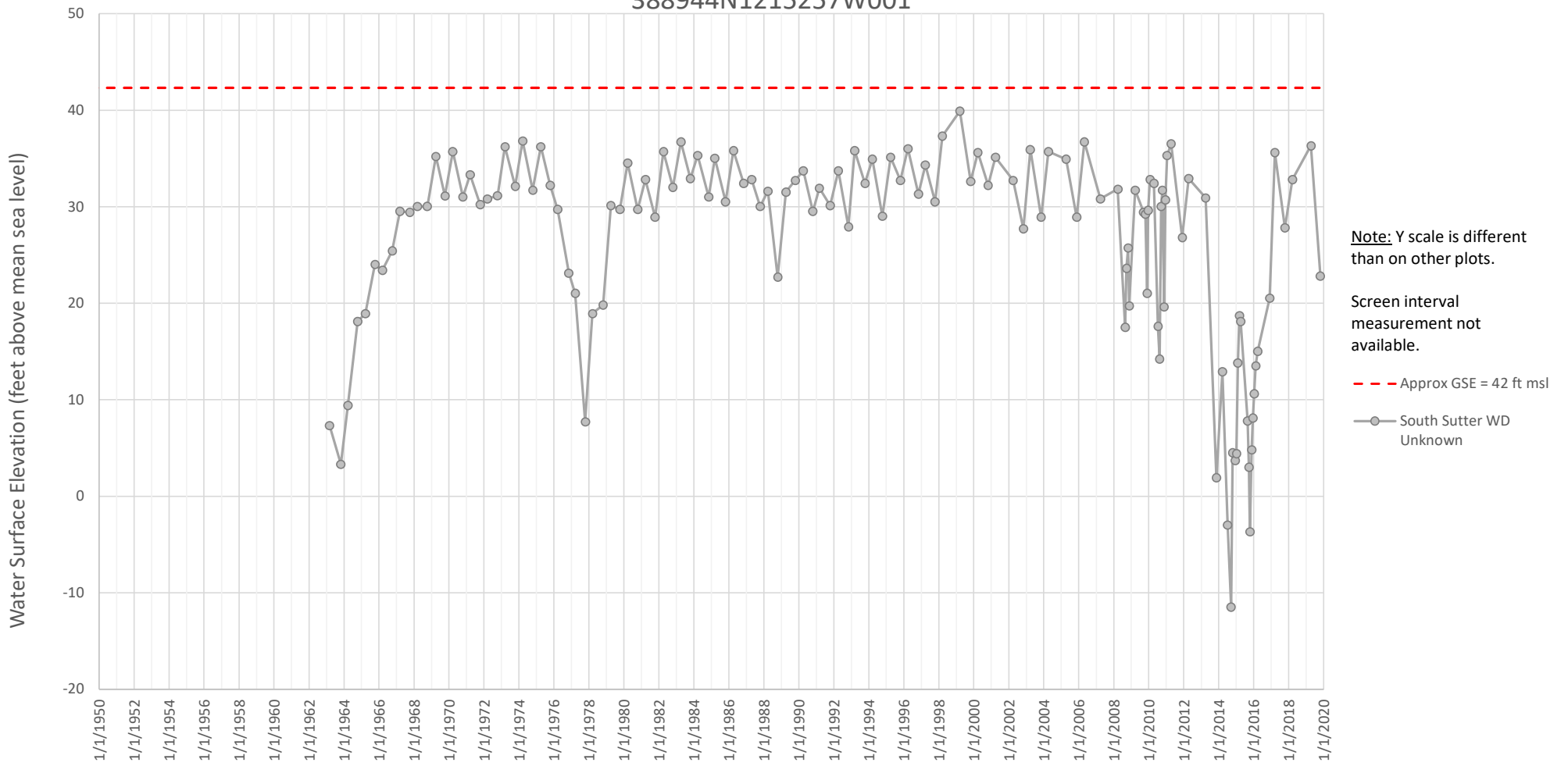
Local Well No. 62
12N04E34H001M
388458N1215100W001



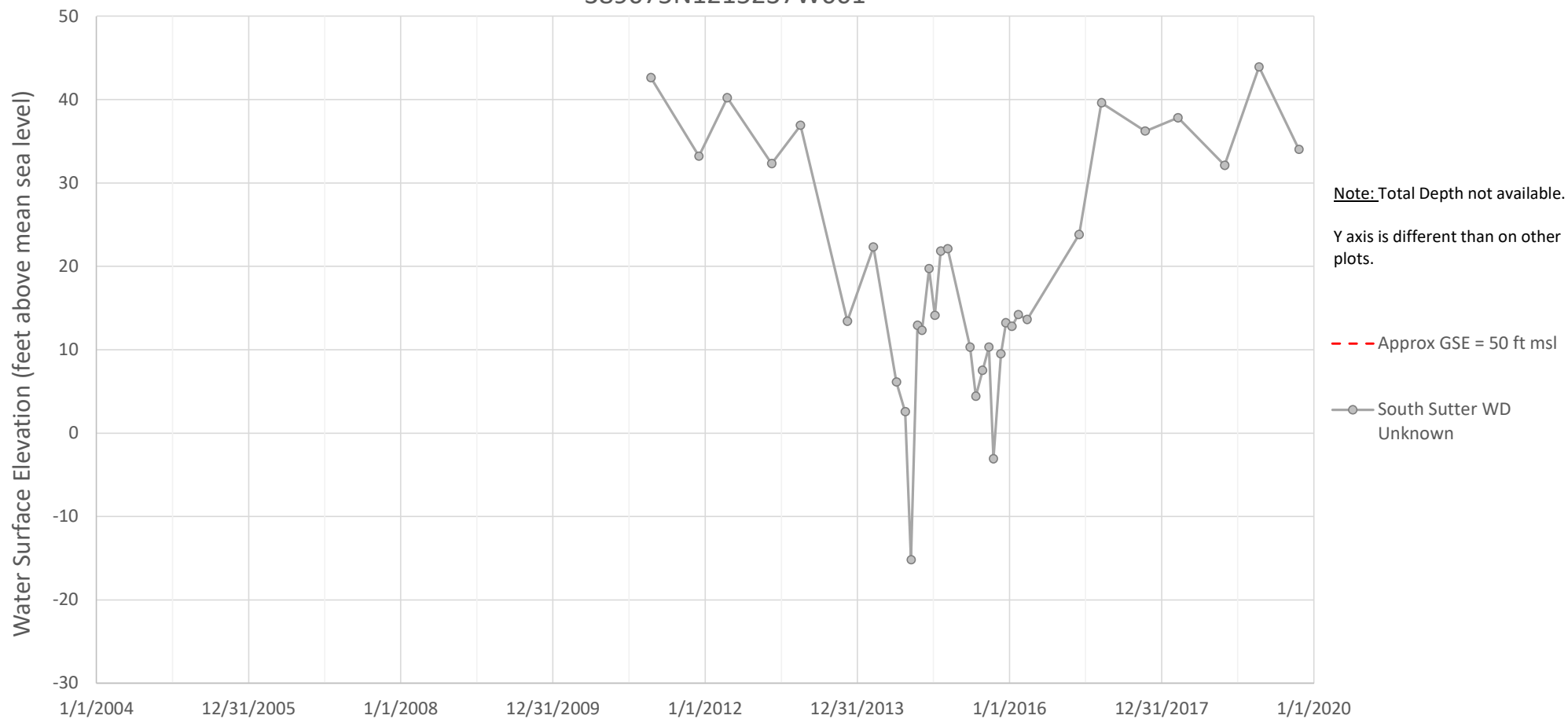
Local Well No. 64
12N04E29J001M
388555N1215468W001



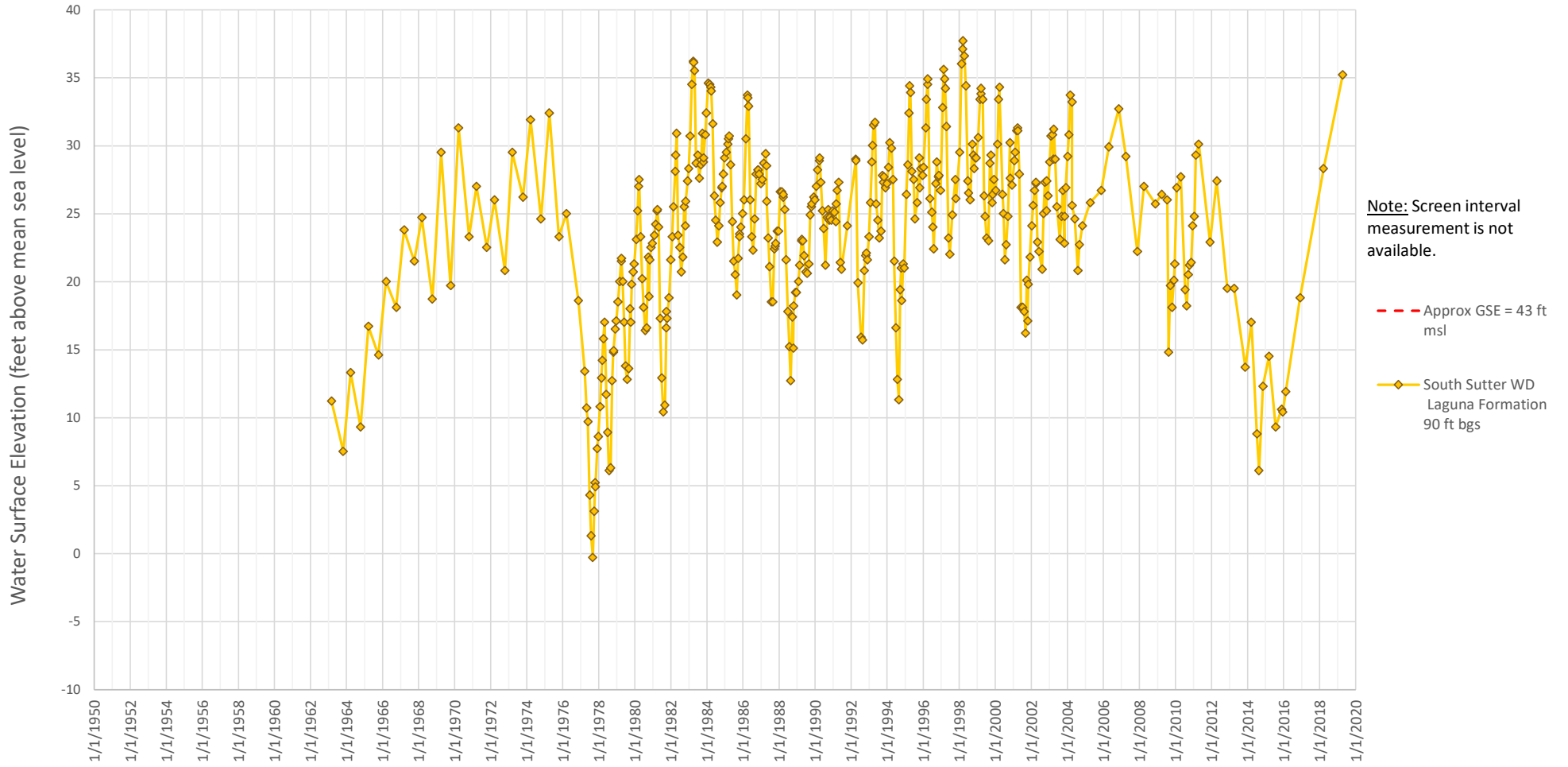
Local Well No.69
South Sutter
388944N1215257W001



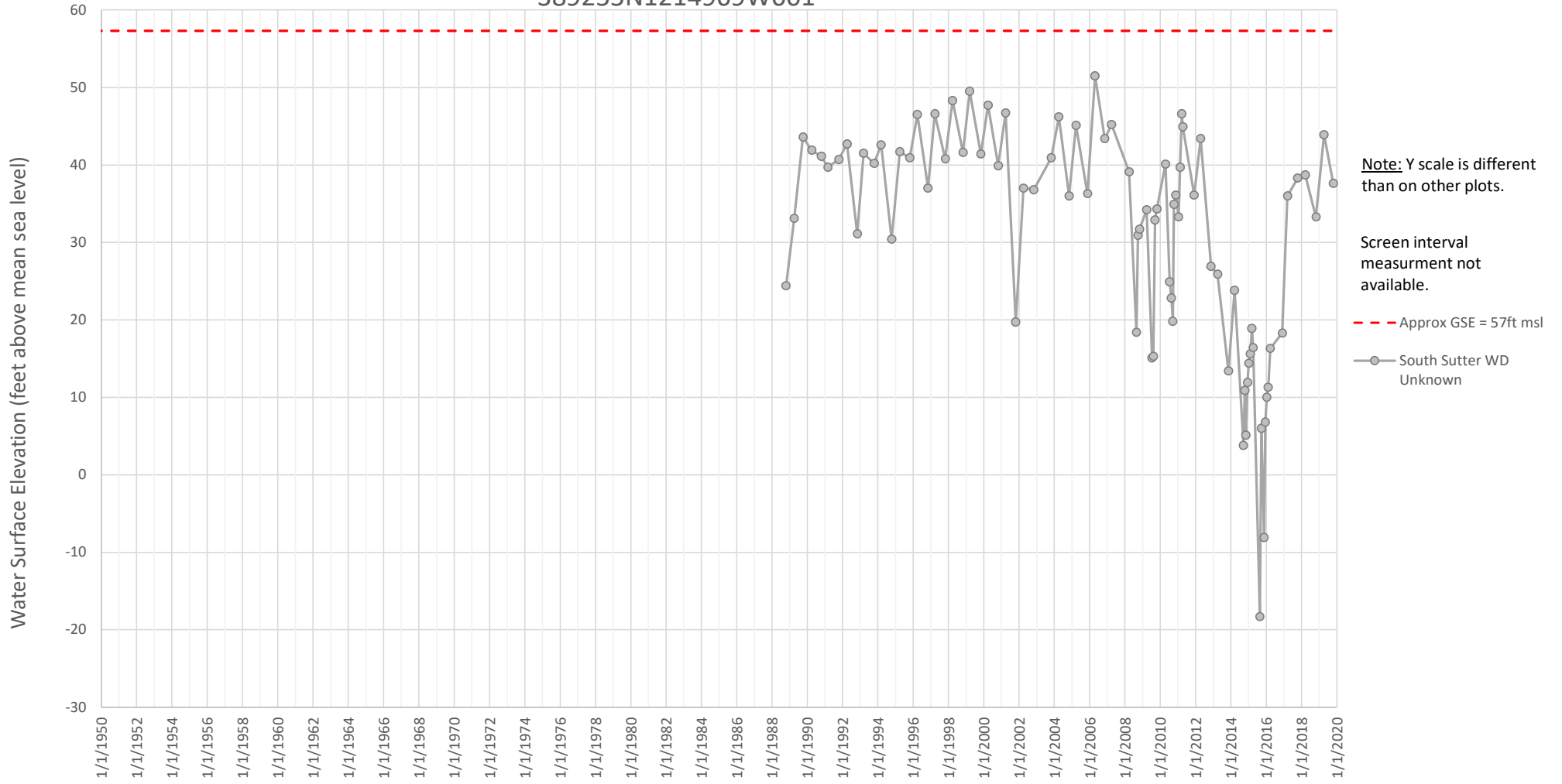
Local Well No. 72
South Sutter
389075N1215237W001



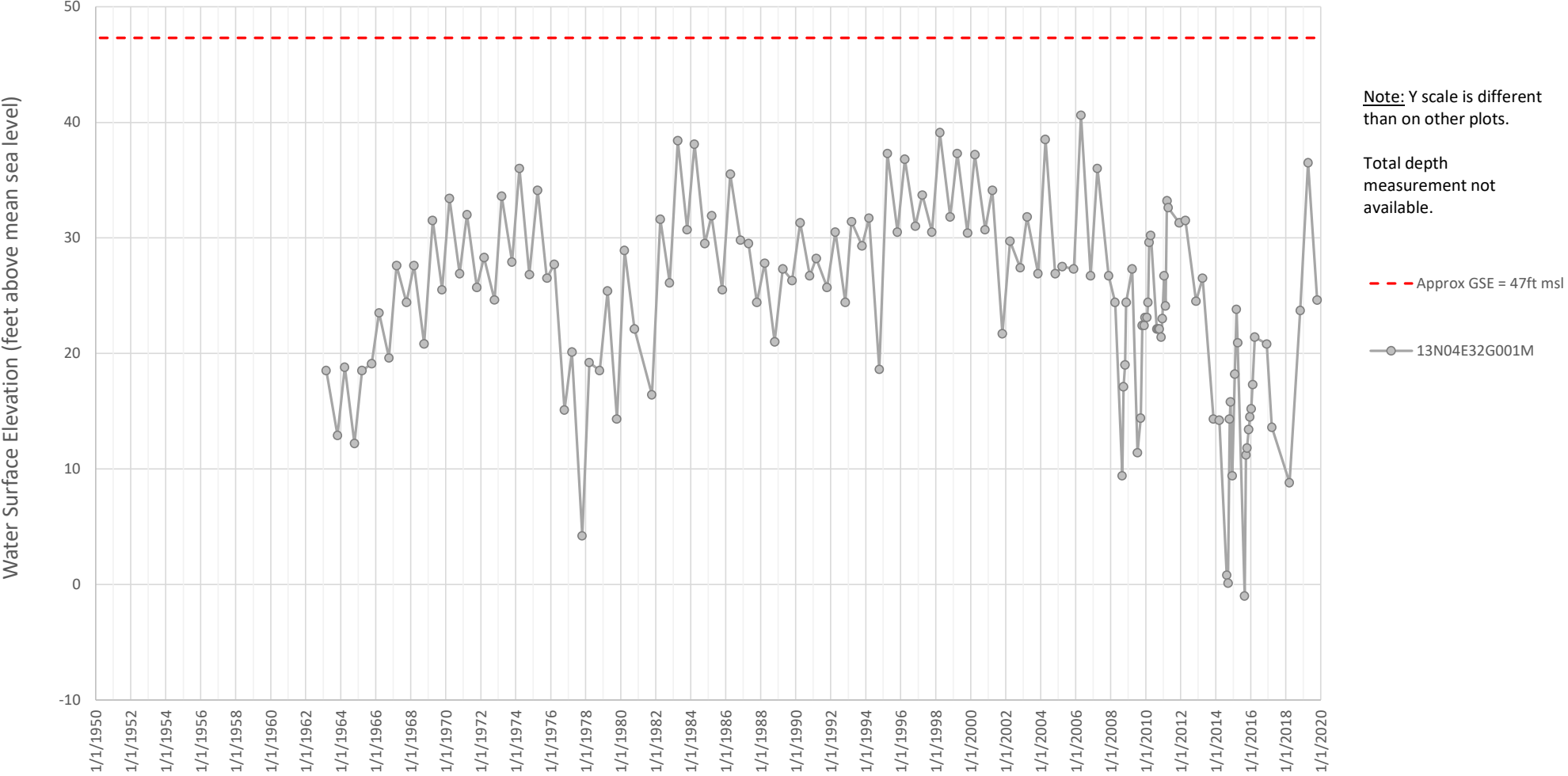
Local Well No. 73
South Sutter
389130N1215441W001



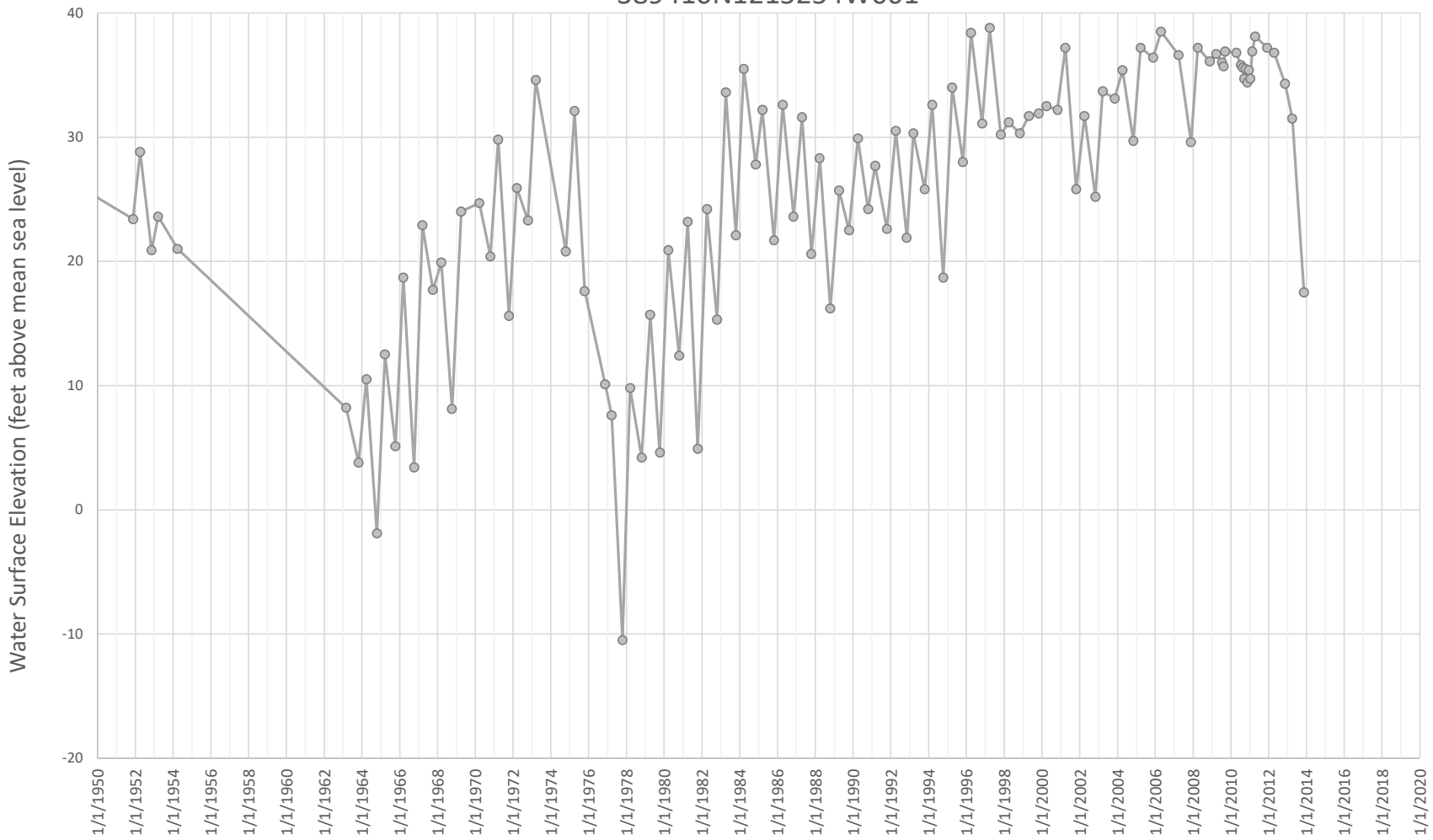
Local Well No. 76
South Sutter
389255N1214969W001



Local Well No. 78
13N04E32G001M
389328N1215489W001



Local Well No. 79
South Sutter
389410N1215254W001

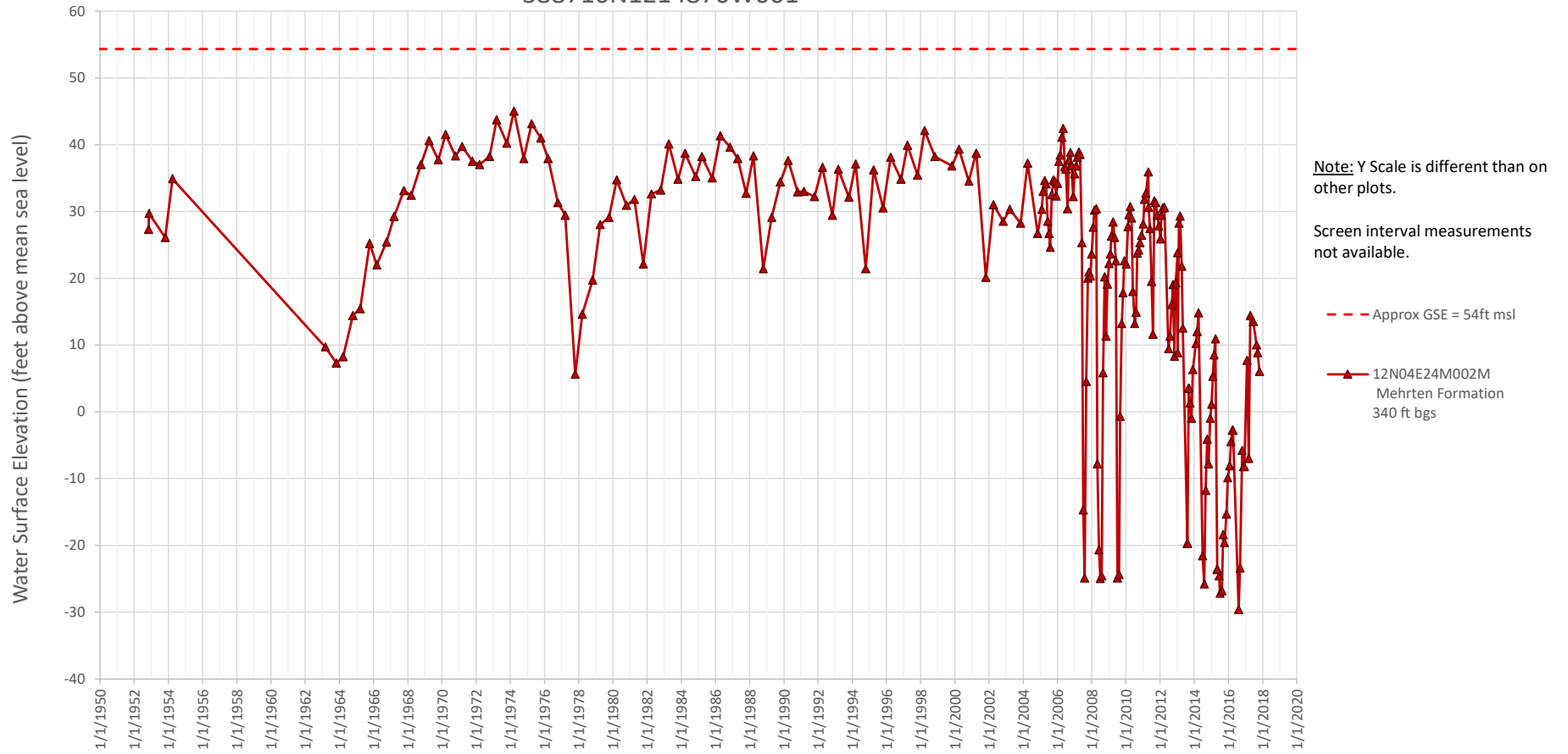


Note: Y scale is different than on other plots.

Screen interval measurement not available.

- - - Approx GSE = 50ft msl
- South Sutter WD Unknown

Local Well No. 87
12N04E24M002M
388710N1214870W001



Local Well No. 88
11N03E03C002M
388357N1216273W001

