

Appendix E: Levee Geologic Sections

NORTH AMERICAN SUBBASIN GROUNDWATER SUSTAINABILITY PLAN

APPENDIX E Levee Geologic Sections

December 2021

Evaluation of Potential Groundwater Impacts Due to Proposed Construction for Natomas Levee Improvement Program

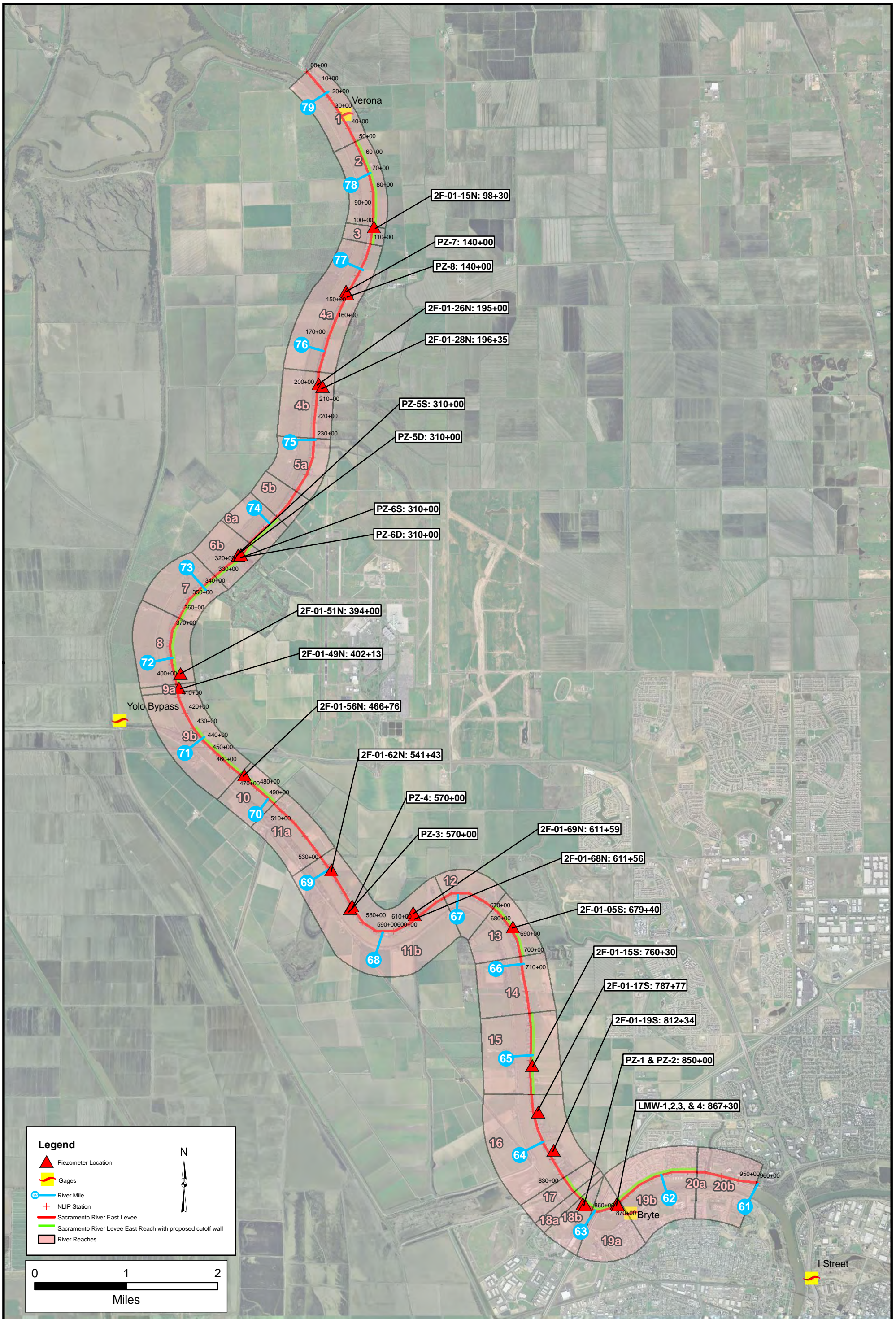
prepared for:

Sacramento Area Flood Control Agency
(SAFCA)

prepared by:

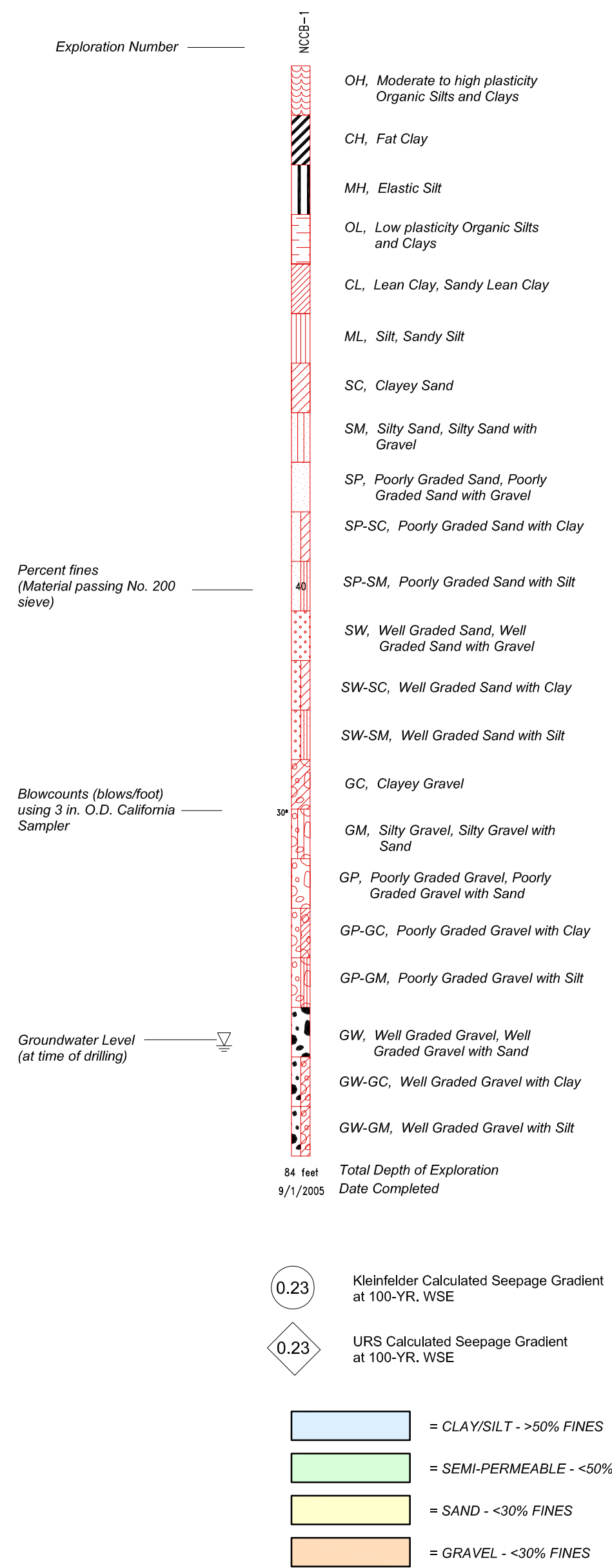
Luhdorff & Scalmanini,
Consulting Engineers

May 4, 2009



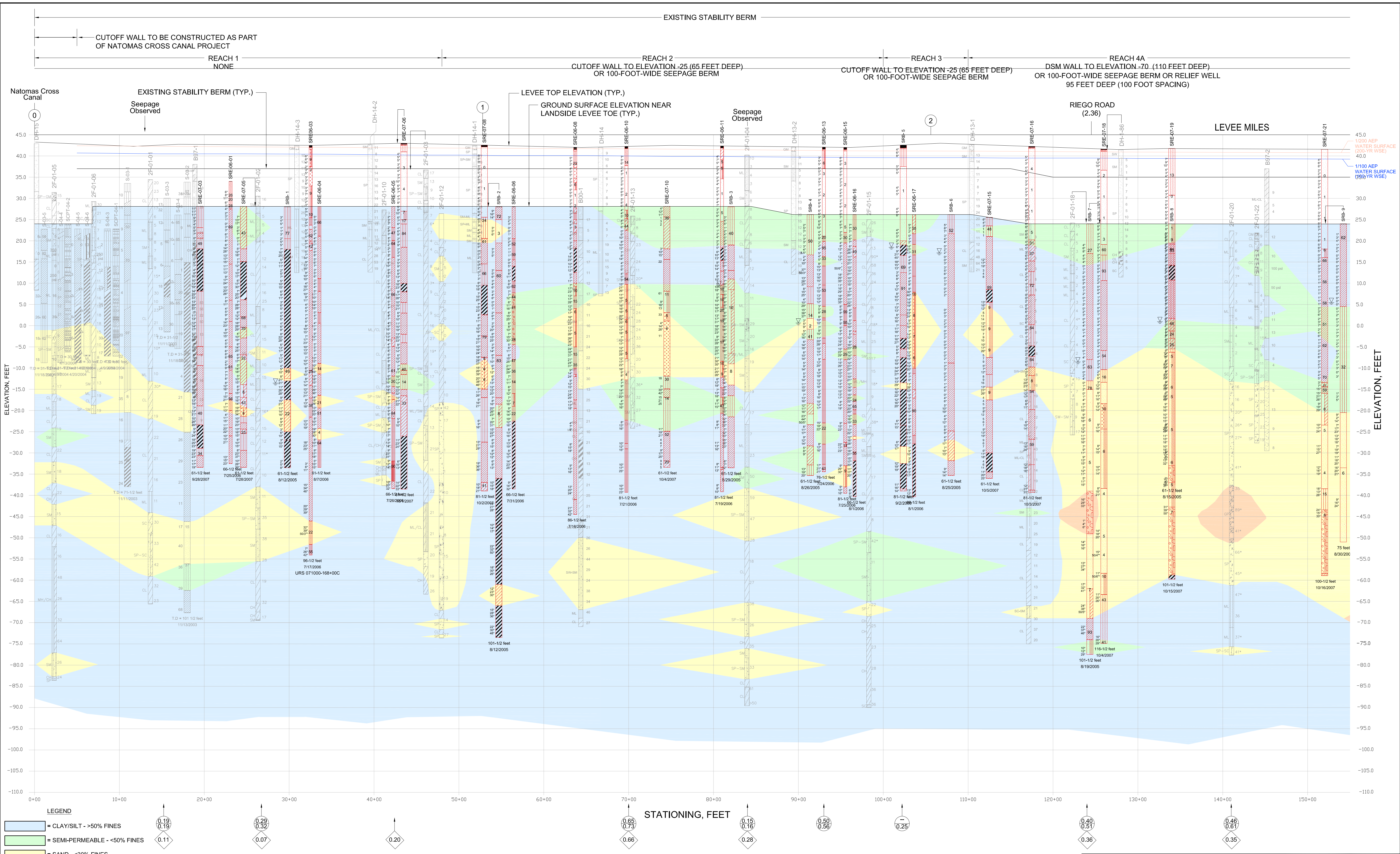
**SUBSURFACE PROFILE
SACRAMENTO RIVER EAST LEVEE**

LOG LEGEND



Notes:

1. Base drawings for these levee profiles, obtained in August 2005 from the Sacramento District U.S. Army Corps of Engineers (USACE) and used with their permission, include stick logs of previous explorations, a levee crown profile, a landside levee toe profile, notes regarding levee performance and completed levee improvements, and elevation scale based on the 1929 National Geodetic Vertical Datum (NGVD, 1929).
2. Logs of the following explorations were added to the USACE base drawings: Kleinfelder 2006 borings (SRE-06-XX); Kleinfelder 2005 borings (SRB-XX); Kleinfelder 2003/2004 Borings S-03-1, S-03-2, S-03-3, S-03-4.
3. Locations of explorations shown are approximate. See Plate 2A through 2E for approximate plan locations of explorations.
4. The log legend shown applies to Kleinfelder 2005 borings (SRB-XX) and Kleinfelder 2006 borings (SRE-06-XX). Caution is advised in using the legend for interpretation of other explorations.
5. Logs represent general soil conditions observed at the point of exploration on the date indicated. Refer to Kleinfelder's 2005 report and Kleinfelder's 2006 report for more detail on the Kleinfelder 2005 borings (SRB-XX) and 2006 borings (SRE-06-XX).
6. Lines separating strata on logs represent approximate boundaries only. Actual transitions may be gradual.
7. No warranty is provided as to the continuity of soil conditions between individual sample locations.
8. Approximate top of boring elevations for Kleinfelder 2006 borings (SRE-06-XX) were obtained using GPS equipment survey; Kleinfelder 2005 borings (SRB-XX) were estimated using topographic data obtained by USACE 1997.
9. The 1/100 AEP and 1/200 AEP water surface profiles shown were provided by MBK Engineers on August 18, 2006. See report for an explanation of these profiles and conditions.
10. Details regarding completed levee improvements have been added to those already on the USACE levee profile base drawings and were obtained from the USACE. Extents of completed levee improvements shown are approximate and are the same as indicated on the USACE profiles. Refer to USACE as-built drawings for actual extents.



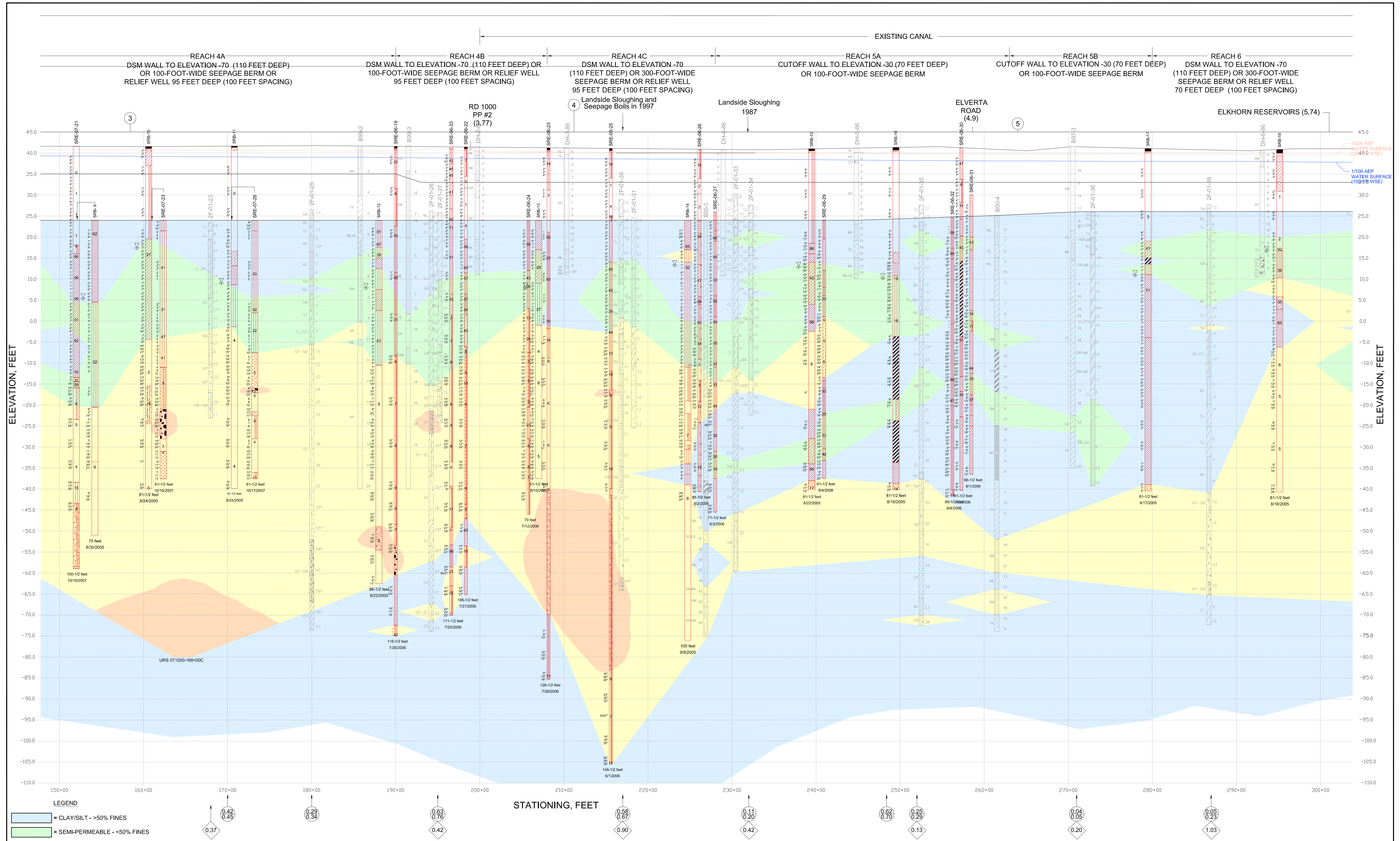
LEGEND

- = CLAY/SILT - >50% FINES
- = SEMI-PERMEABLE - <50% FINES
- = SAND - <30% FINES
- = GRAVEL - <30% FINES

URS 071000-168+00C

KLEINFELDER		SACRAMENTO RIVER EAST LEVEE PROFILE	PLATE
Basis of Design Report		3B	
Sacramento River East Levee Reaches 1 through 4B		Natamas Basin Evaluation	
Sacramento and Sutter Counties, California		Date: 09/24/2007 Filename: 72834_p1.dwg	
Drawn By: D. ROSS	Project No.: 72834AASRN		

NOTE: SOME STICK LOGS HAVE BEEN MOVED IN ORDER FOR ALL DATA TO BE READABLE. REFER TO THE BORING LOCATION MAPS FOR ACCURATE STATIONING OF THESE EXPLORATIONS.



LEGEND

	= CLAY/SILT - >50% FINES
	= SEMI-PERMEABLE - <50% FINES
	= SAND - <30% FINES
	= GRAVEL - <30% FINES

NOTE: SOME STICK LOGS HAVE BEEN MOVED IN ORDER FOR ALL DATA TO BE READABLE. REFER TO THE BORING LOCATION MAPS FOR ACCURATE STATIONING OF THESE EXPLORATIONS.

KLEINFELDER		SACRAMENTO RIVER EAST LEVEE PROFILE
Basis of Design Report		PLATE
Sacramento River East Levee Reaches 1 through 4B		3C
Natomas Basin Evaluation		
Sacramento and Sutter Counties, California		

